

## Westland Whirlwind F Mk.I 'Cannon Fighter'

EN

Project Westland P.9 was designed upon F.37/35 Specifications that called for escort fighter with heavy armament. P.9 project was a twin engine aircraft with four 20 mm cannons. In February 1937 RAF and Westland signed a contract for manufacture of two prototypes. The first prototype L6844 took off for the first time on October 11, 1938. Following two years were both prototypes, the second was L6845, thoroughly tested and it subsequently led to the tail planes changes and deleting of slats. The production of the series machines began in 1940 and they were assigned to the RAF 263. Squadron. Another squadron, this time RAF 137. was equipped with Whirlwinds in 1941. Due to the R&R Peregrine engines no other units were equipped with Whirlwinds. These engines were unreliable and moreover their production was stopped on behalf of more needed Merlins. This also led to the production being stopped. Even though the Whirlwinds were fast, highly maneuverable and reputedly they were even capable to outmaneuver single engine fighter. Further, the heavy armament consisting of four cannons made the Whirlwind deadly opponent. The heavy armament was later intensified by addition of two wing mounted bomb racks. These modified Whirlwinds were designated FB Mk.I or Mk.IA and were used for ground attack missions. Their successful attacks on German ships in La Manche Channel and in occupied France earned them a nickname Whirlbomber. Whirlwinds fought in first line combat until the end of 1943 and then were withdrawn. The L6844 prototype was used as test bed for various armament layouts, such as 12 machine guns or 37 mm cannon.

Wingspan: 13.73 m, length: 9.84 m, max. speed: 579 km/h, range: 1,000 km, service ceiling: 9,150 m.

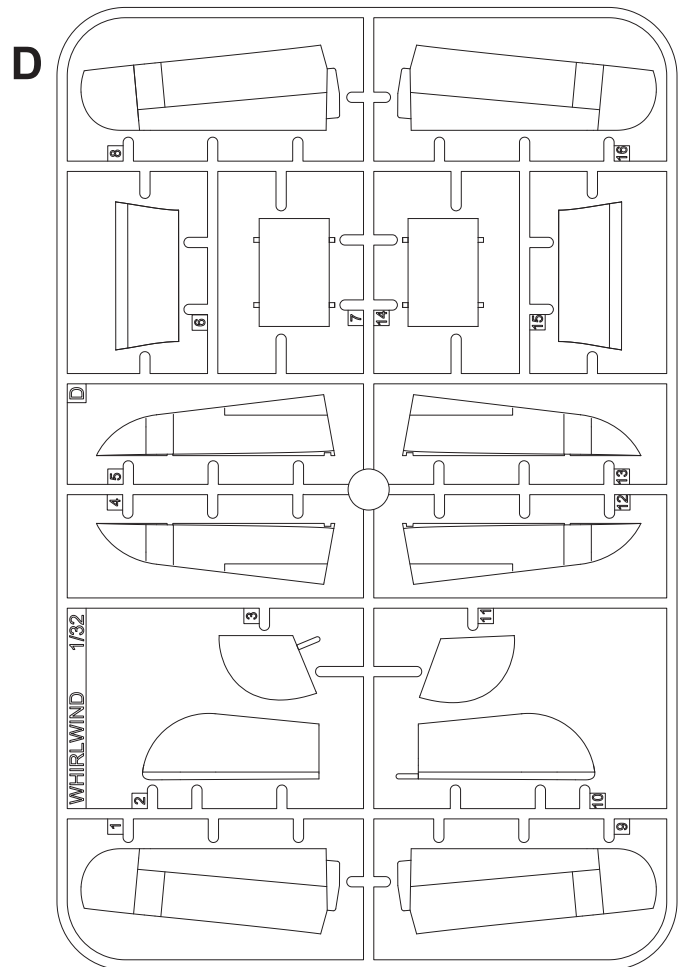
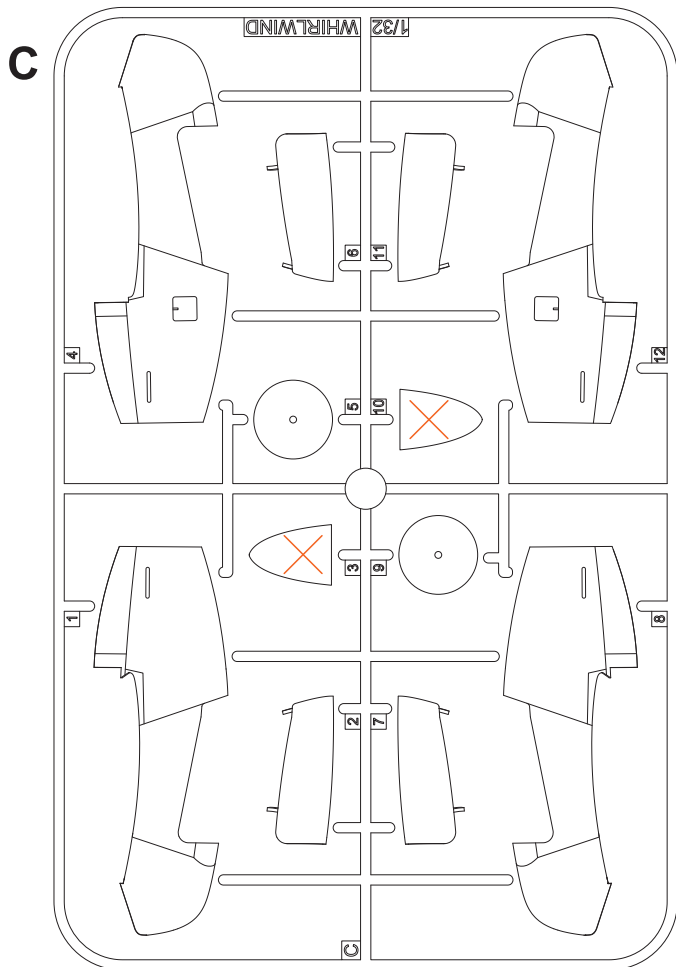
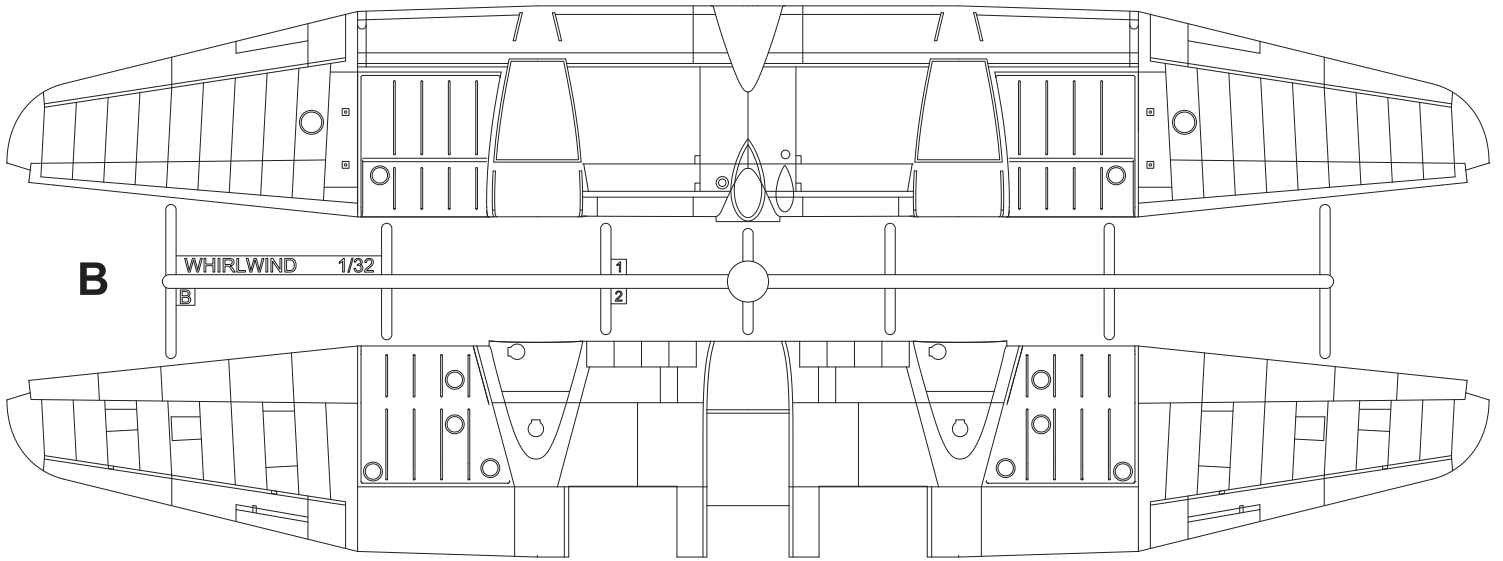
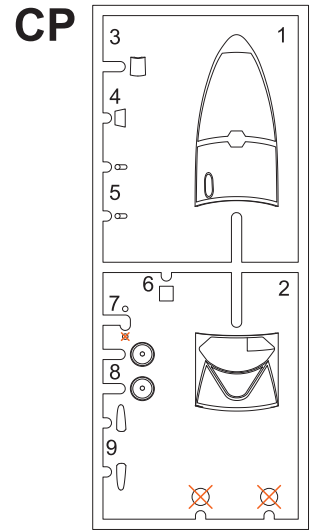
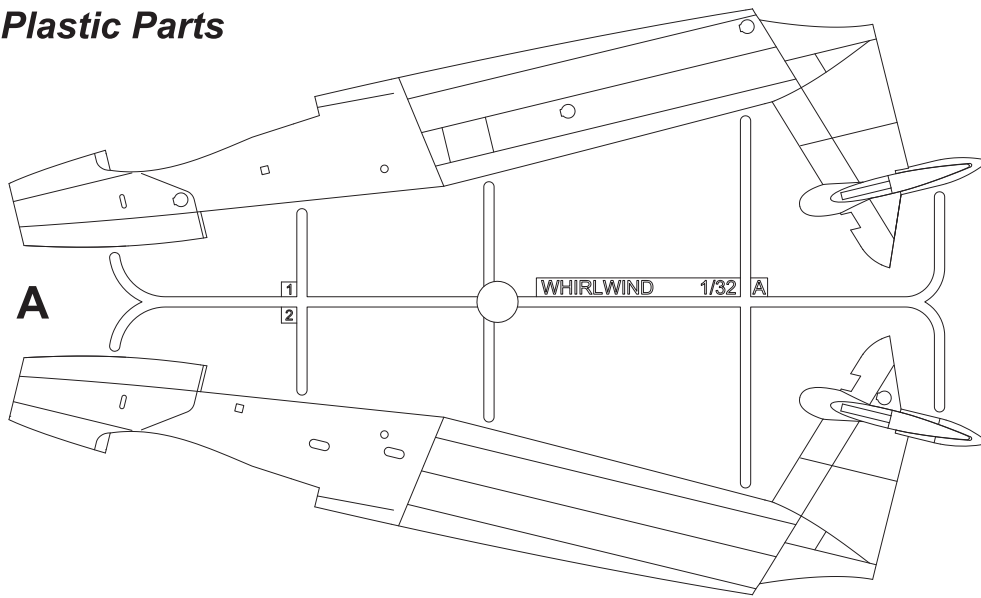
CZ

Na základě specifikací F.37/35, které požadovaly těžce vyzbrojenou stíhačku pro boj s bombardéry, vznikl u firmy Westland projekt P.9, dvomotorový stroj s výzbrojí čtyř kanonů ráže 20 mm. V únoru 1937 RAF uzavřelo s firmou Westland smlouvu na postavení dvou prototypů. První z nich, L6844 vzlétl poprvé 11. října 1938. Následovaly dva roky zkoušek, do kterých se zapojil i druhý prototyp L6845. Během těchto zkoušek se měnily hlavně ocasní plochy a byly zrušeny sloty. Sériové stroje se začaly vyrábět v roce 1940. Do výzbroje je dostala 263. squadrona RAF. V roce 1941 je dostala další jednotka 137. squadrona RAF. Další jednotky už tímto strojem vyzbrojeny nebyly. Na vině byly hlavně motory R&R Peregrine. Byly nespolehlivé a navíc jejich produkce byla zastavena ve prospěch potřebnějších Merlinů. To vedlo i k zastavení výroby Whirlwindů. Ty přitom byly rychlé a obratné, údajně byly schopné vymanévrovat i jednomotorovou stíhačku. A při své silné výzbroji čtyř kanonů představovaly nebezpečného protivníka. Jejich silná výzbroj byla později posílena i montáží závěsníků bomb pod křídlo. Takto upravené Whirlwindy byly označeny FB Mk.I nebo Mk.IA a nasazeny do bitevních akcí. Jejich úspěchy při útocích na německou lodní dopravu v Kanálu La Manche a v okupované Francii jim vynesly přezdívku Whirlbomber. Whirlwindy bojovaly v první linii do konce roku 1943, pak byly vyřazeny. Na prototypu L6844 byly testovány různé varianty výzbroje, např. dvanáct kulometů nebo kanon ráže 37 mm.

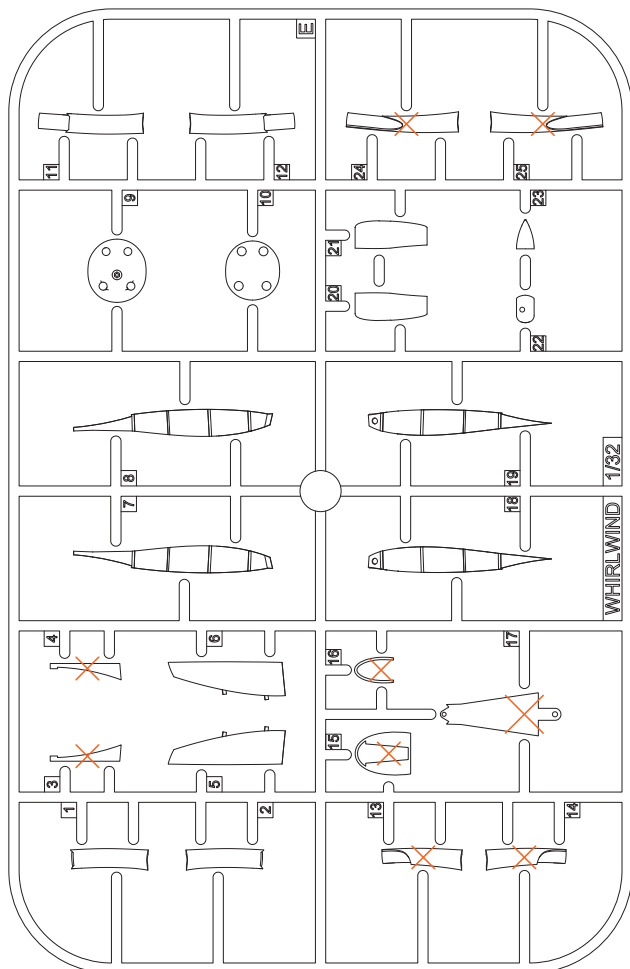
Rozpětí: 13,73 m, délka: 9,84 m, max. rychlost: 579 km/h, dolet: 1000 km, dostup: 9150 m.

# Plastic Parts

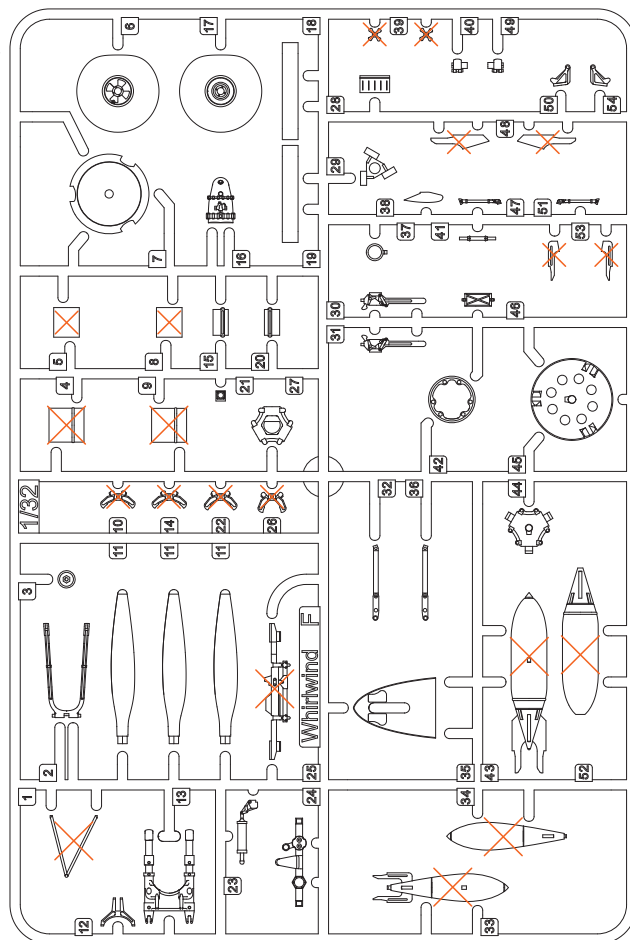
# Clear Parts



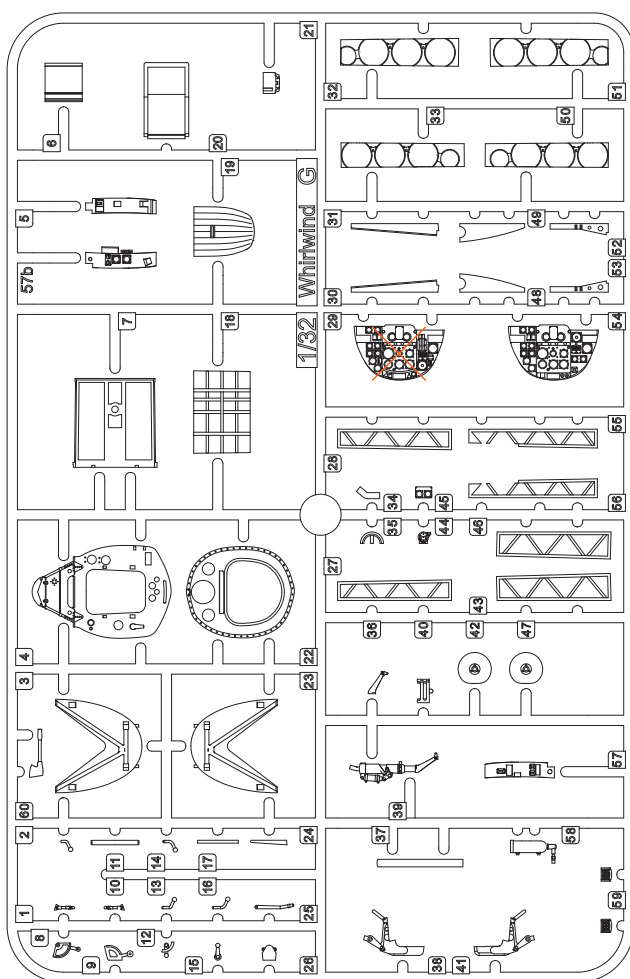
M



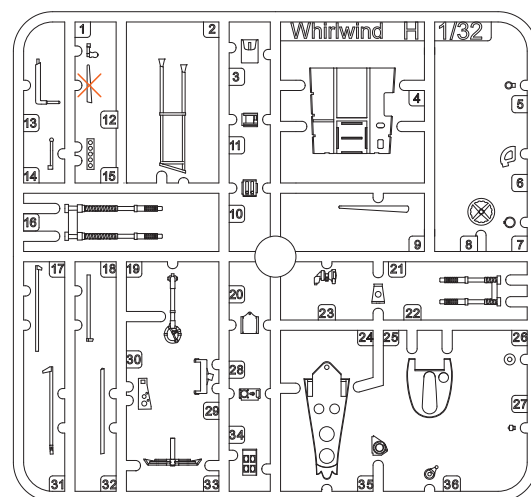
2x  
F



G



H



Barvy GUNZE / GUNZE Colour No.

A	Černá / Black	H12 / C33
B	Barva pneu / Tyre Black	H77 / C137
C	Tmavý kov / Dark Iron	MC214
D	Hliník / Aluminium	MC218
E	Hnědočervená / Red Brown	H47 / C41
F	Opálený kov / Burnt Iron	H76 / C61
G	Interiér. šedozelená / Interior Grey Green	H364 / C364
H	Červená / Red	H3 / C3
I	Žlutá / Yellow	H4 / C4

X Tento díl nepoužít  
Do Not Use This Part

SYMBOLS



MOŽNOST VOLBY  
OPTIONAL  
NACH BELIEBEN  
OPTION



POUŽÍT KYANOAKRYLÁTOVÉ LEPIDLO  
INSTANT CYANOACRYLATE GLUE  
ZYANOAKRYLATKLEBER  
COLLE CYANOACRYLAT



OHNOUT  
BEND  
BIEGEN  
COURBER



ZHOTOVIT NOVÉ  
SCRATCH BUILD  
FERTIGSTELLEN  
ACHEVER

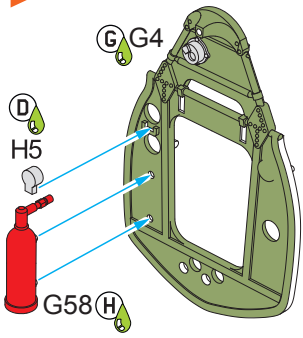


ŘEZAT/VRTAT  
CUT OFF/DRILL  
ENTFERNEN  
DETACHER

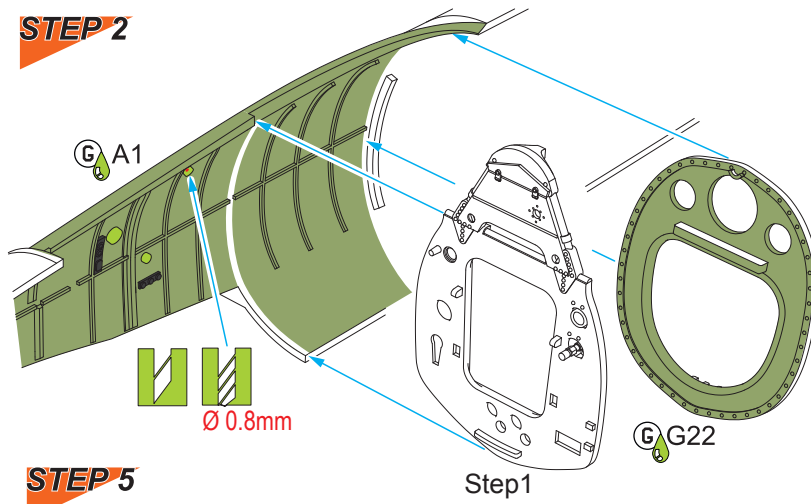


NATRÍT  
COLOUR  
FARBEN  
PEINDRE

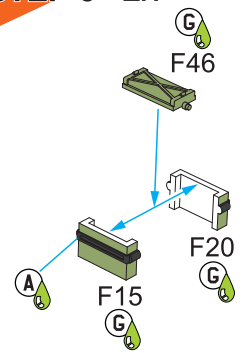
**STEP 1**



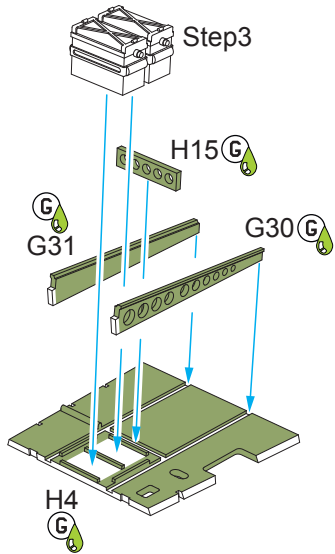
**STEP 2**



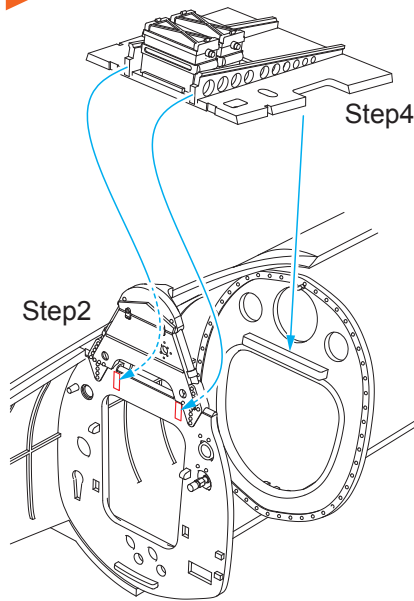
**STEP 3 2x**



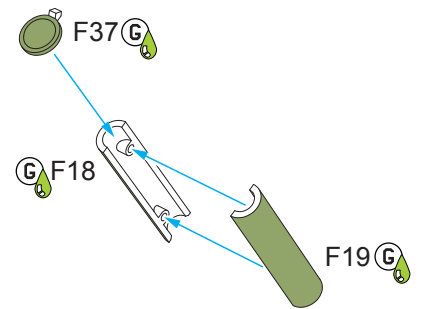
**STEP 4**



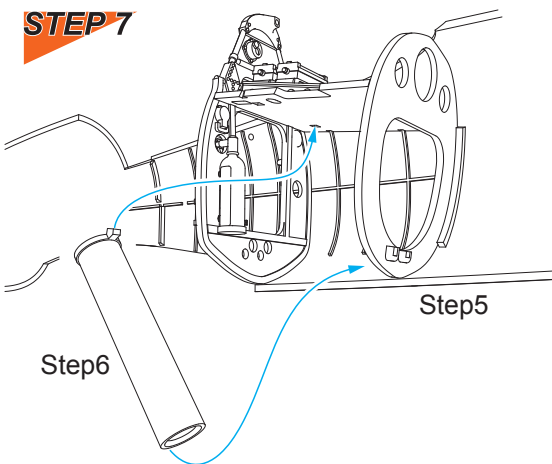
**STEP 5**



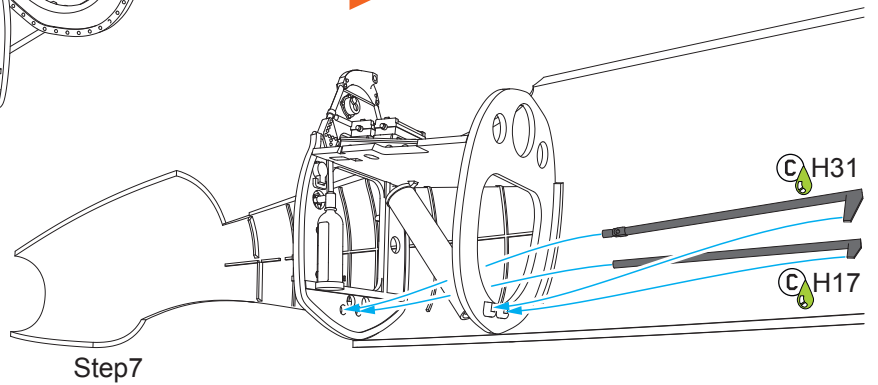
**STEP 6 2x**



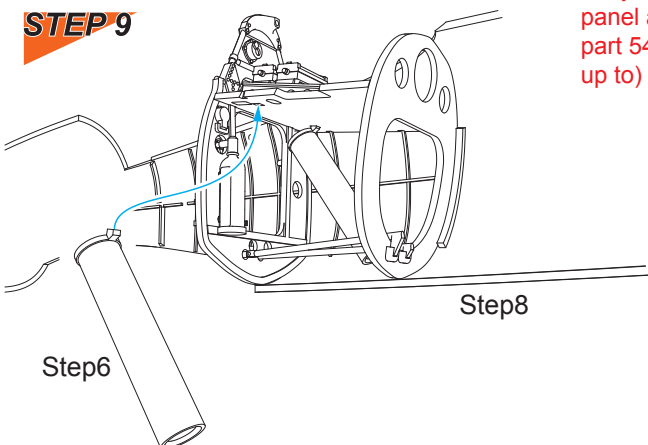
**STEP 7**



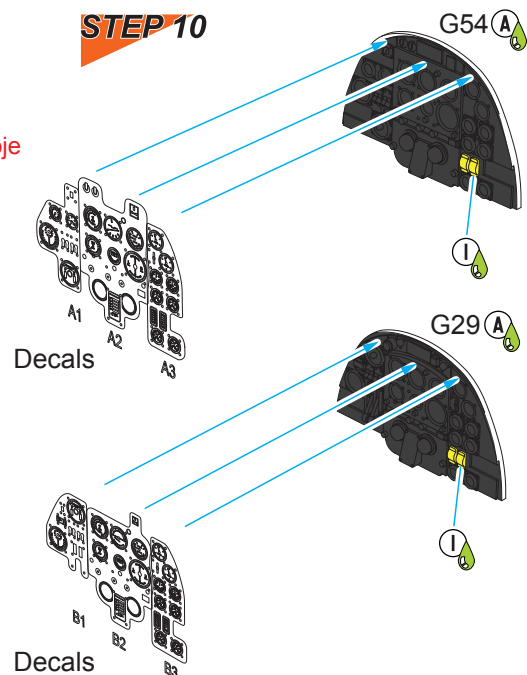
**STEP 8**



**STEP 9**



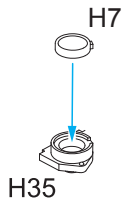
**STEP 10**



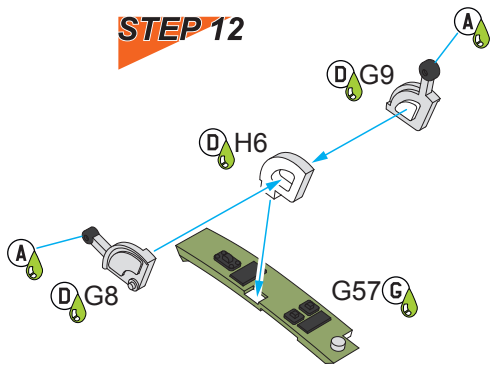
Kroky 10, 14 ukazují sestavu rané palubní desky, díl 54. (do stroje P6983)

Steps 10, 14 show early instrument panel assembly, part 54. (machines up to)

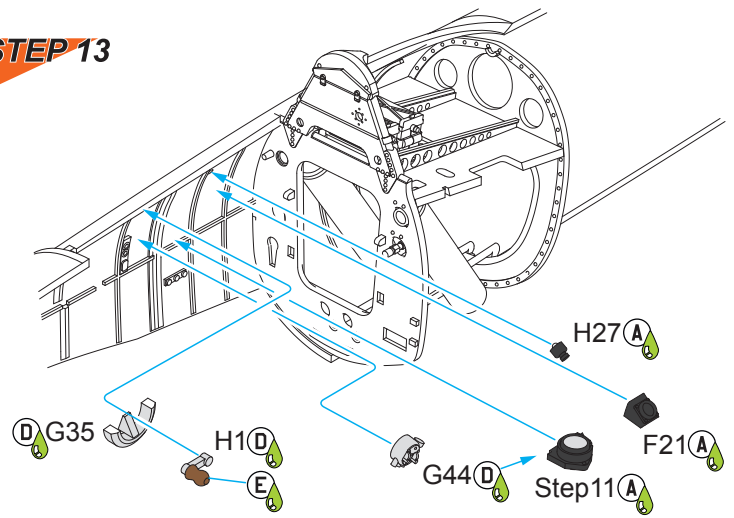
**STEP 11**



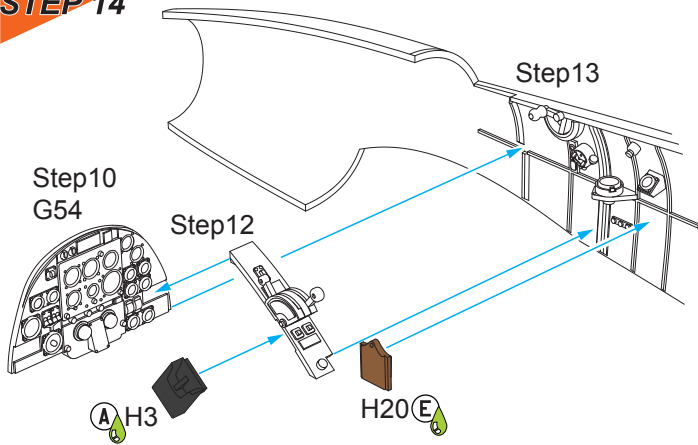
**STEP 12**



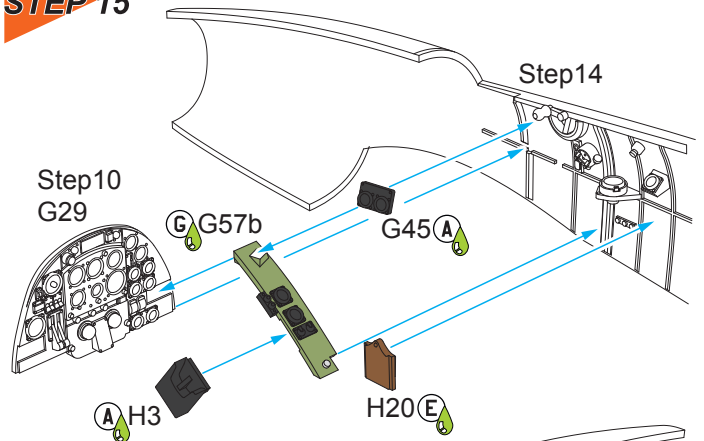
**STEP 13**



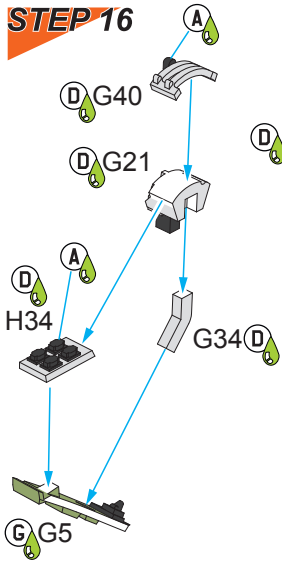
**STEP 14**



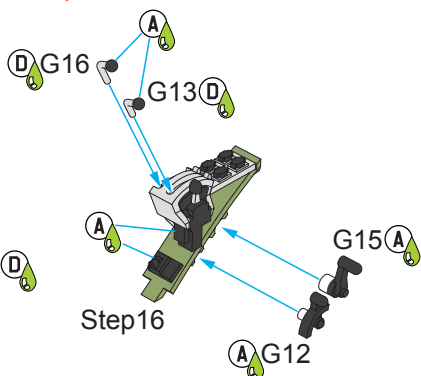
**STEP 15**



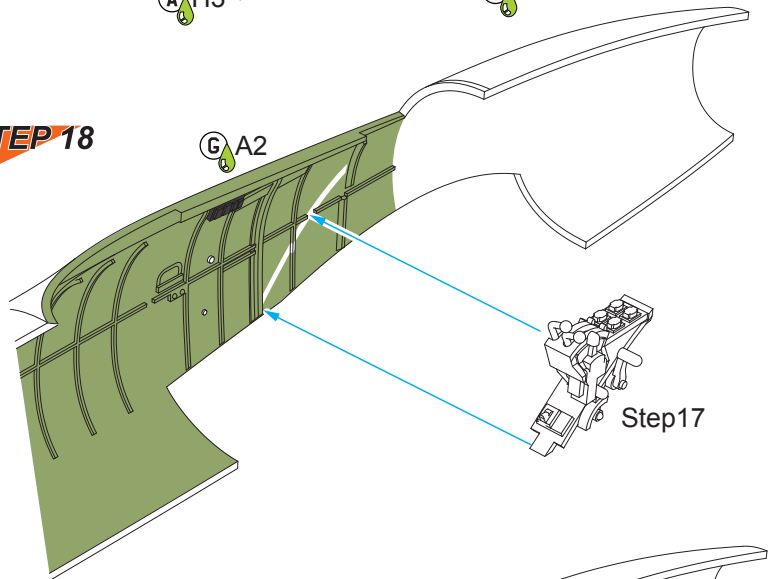
**STEP 16**



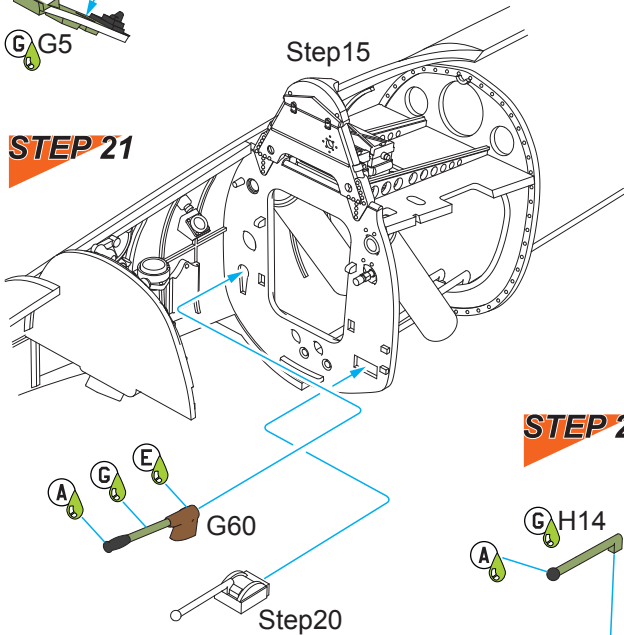
**STEP 17**



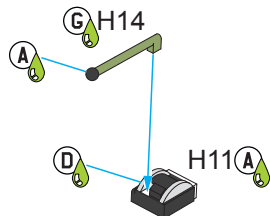
**STEP 18**



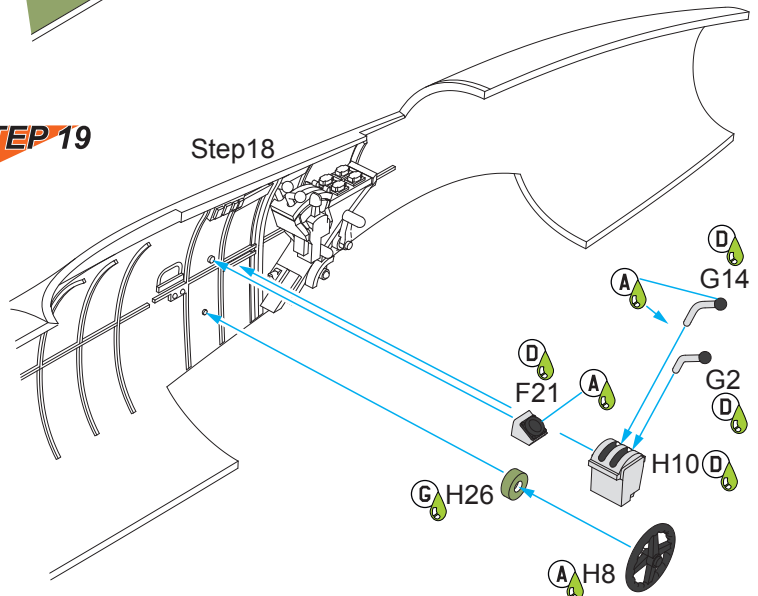
**STEP 21**



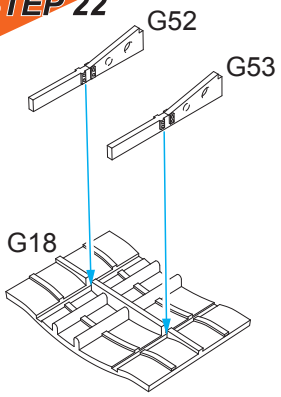
**STEP 20**



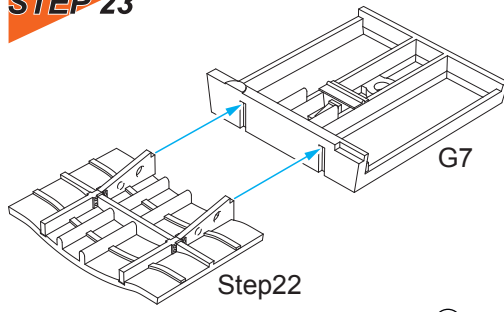
**STEP 19**



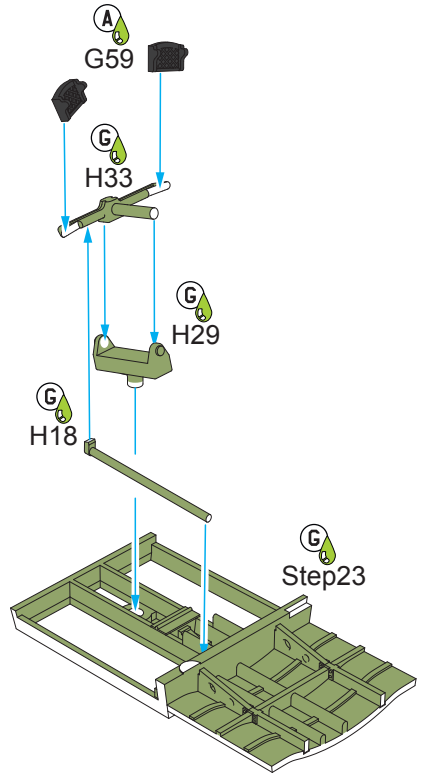
**STEP 22**



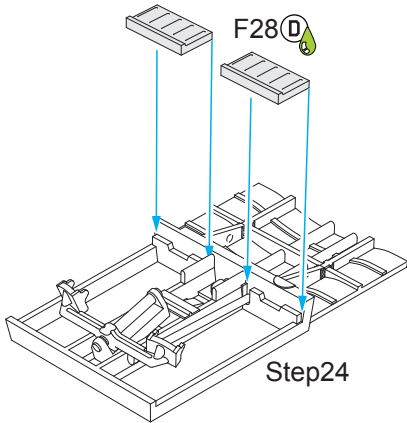
**STEP 23**



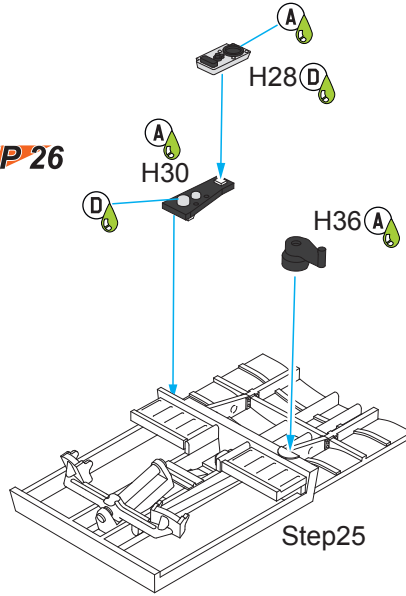
**STEP 24**



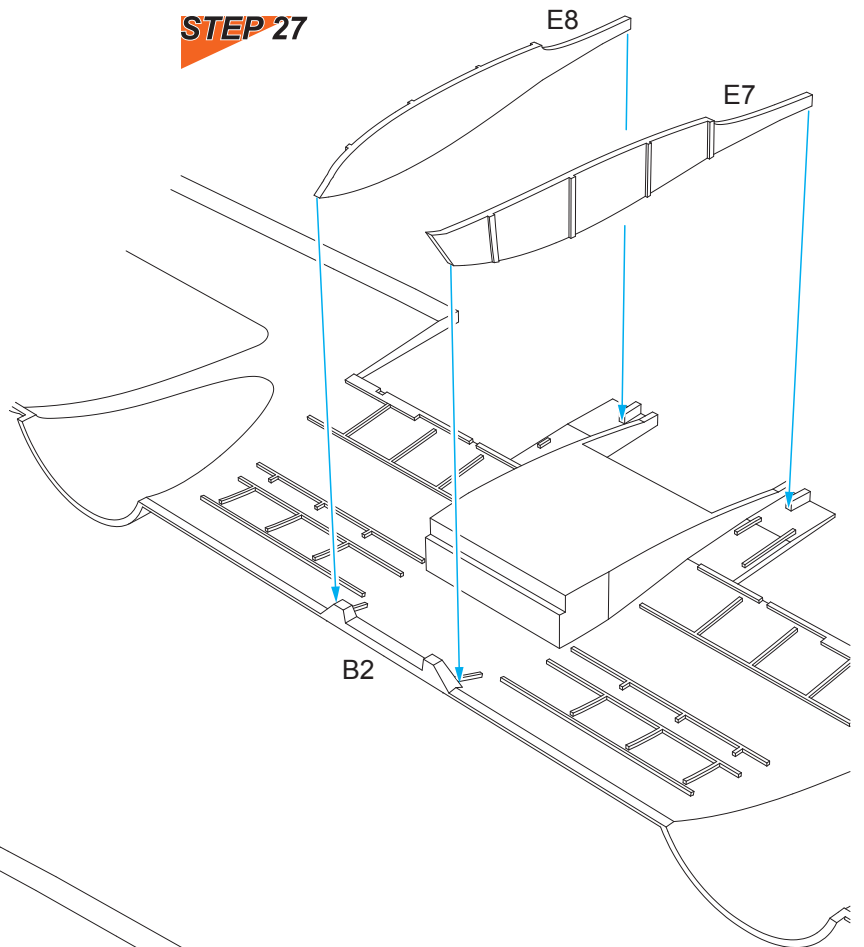
**STEP 25**



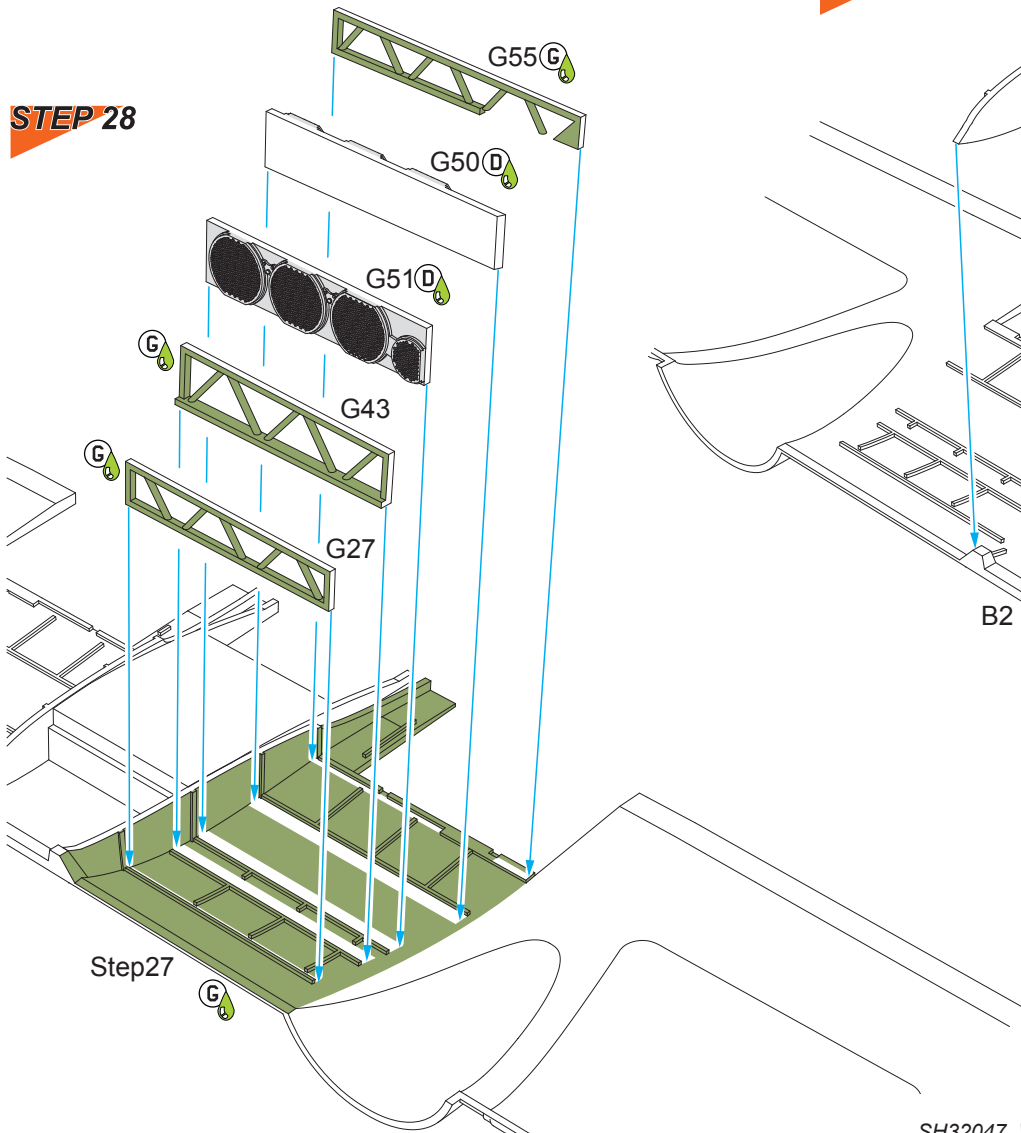
**STEP 26**



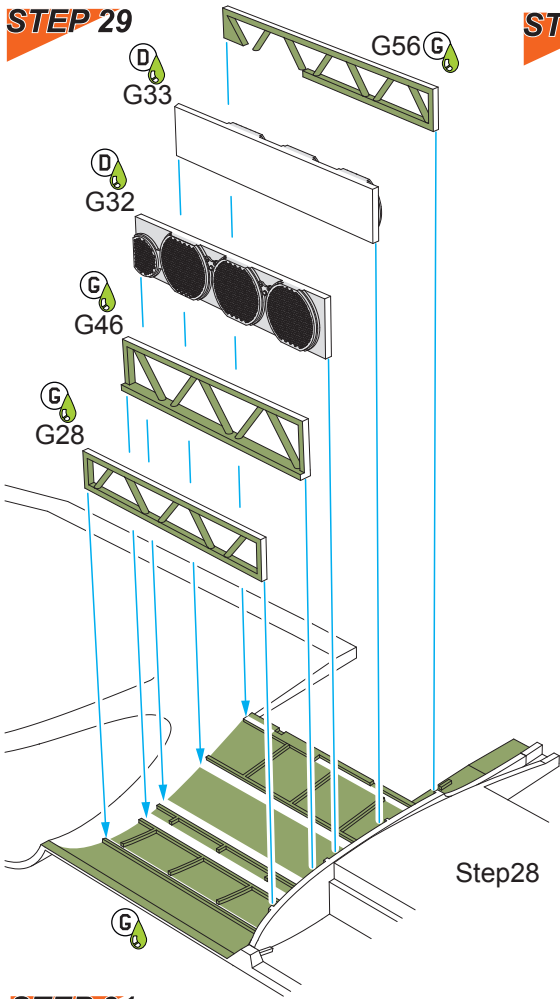
**STEP 27**



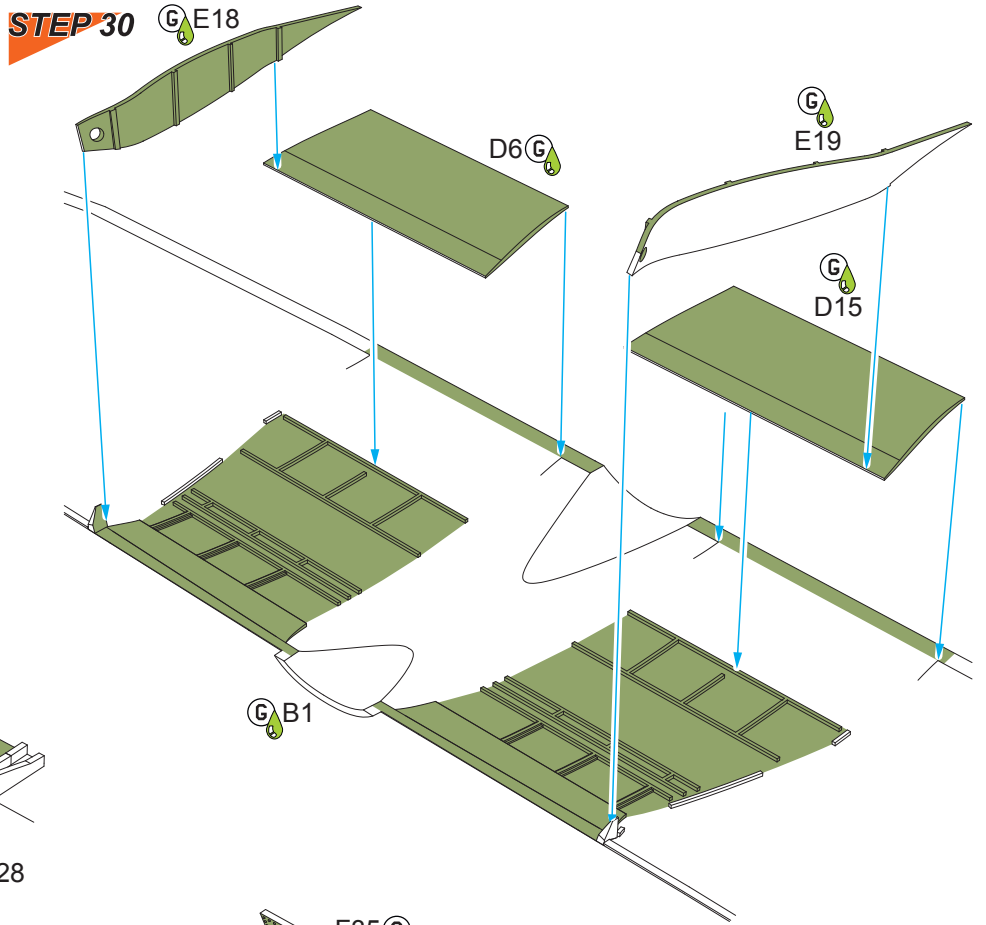
**STEP 28**



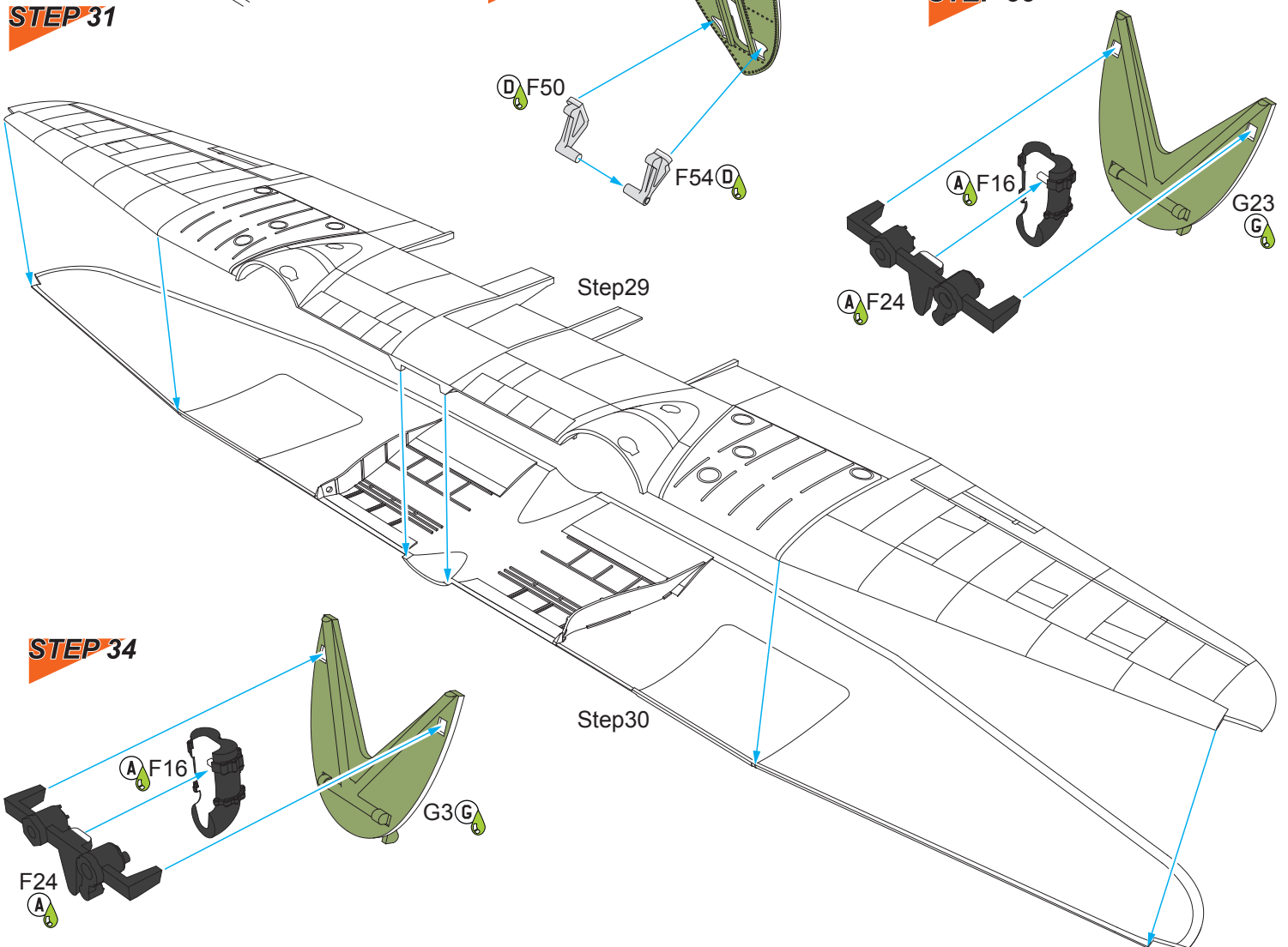
**STEP 29**



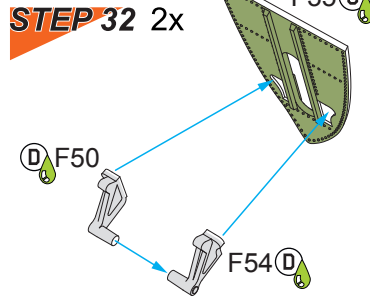
**STEP 30**



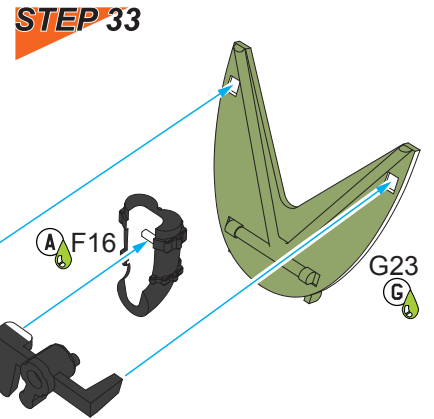
**STEP 31**



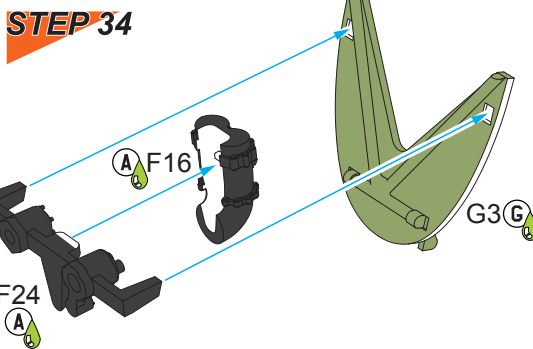
**STEP 32 2x**



**STEP 33**

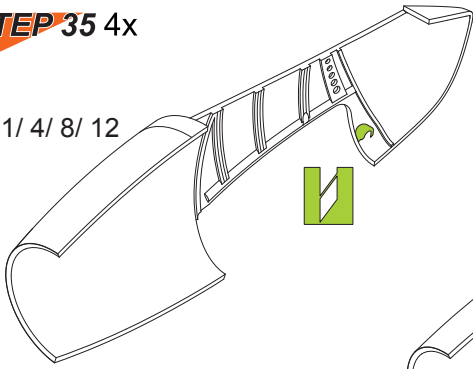


**STEP 34**



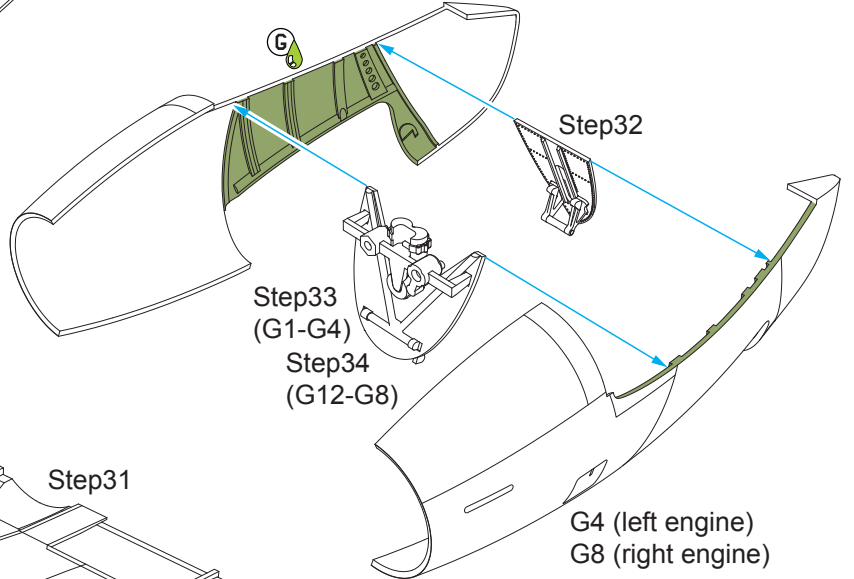
**STEP 35** 4x

C1/ 4/ 8/ 12

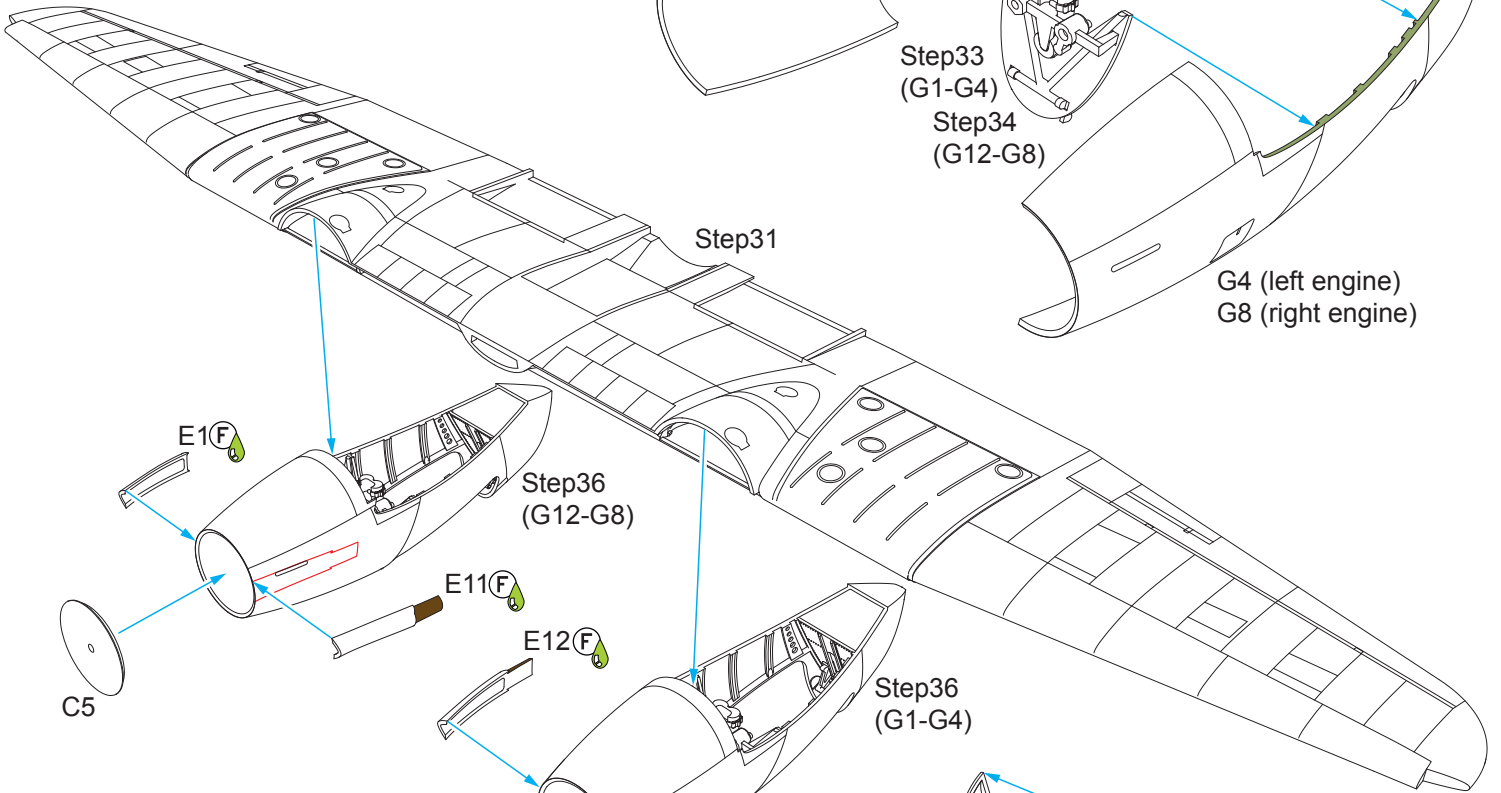


**STEP 36**

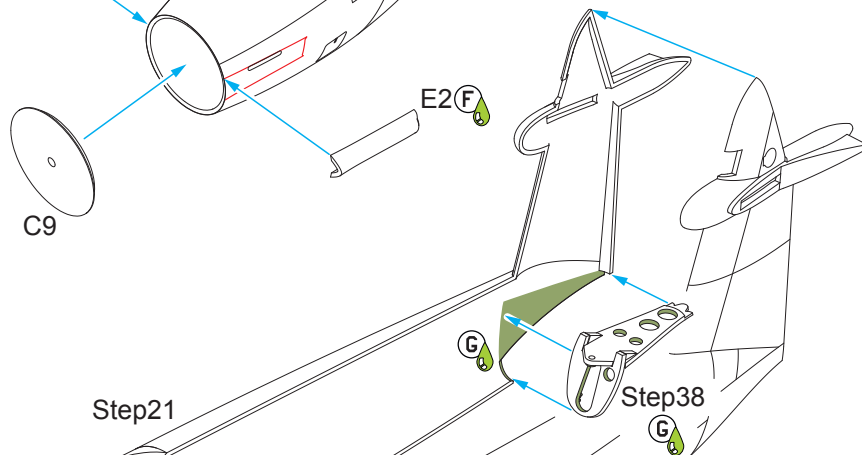
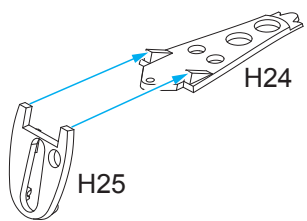
G1 (left engine)  
G12 (right engine)



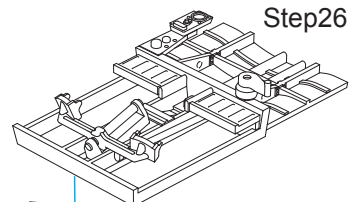
**STEP 37**



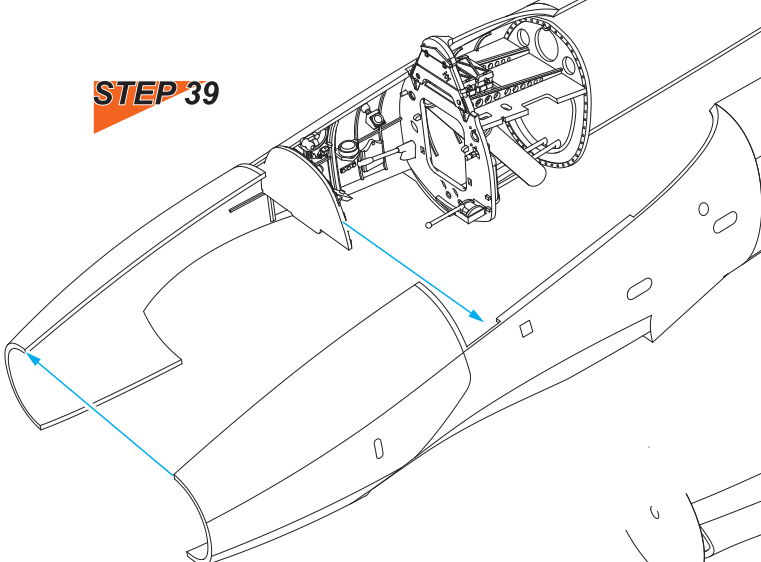
**STEP 38**



**STEP 40**



**STEP 39**

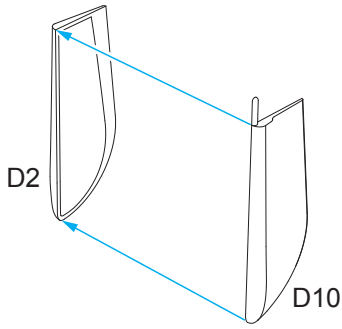


Step19

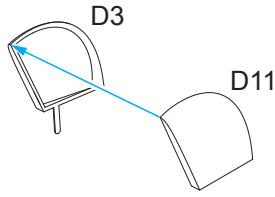
Step37



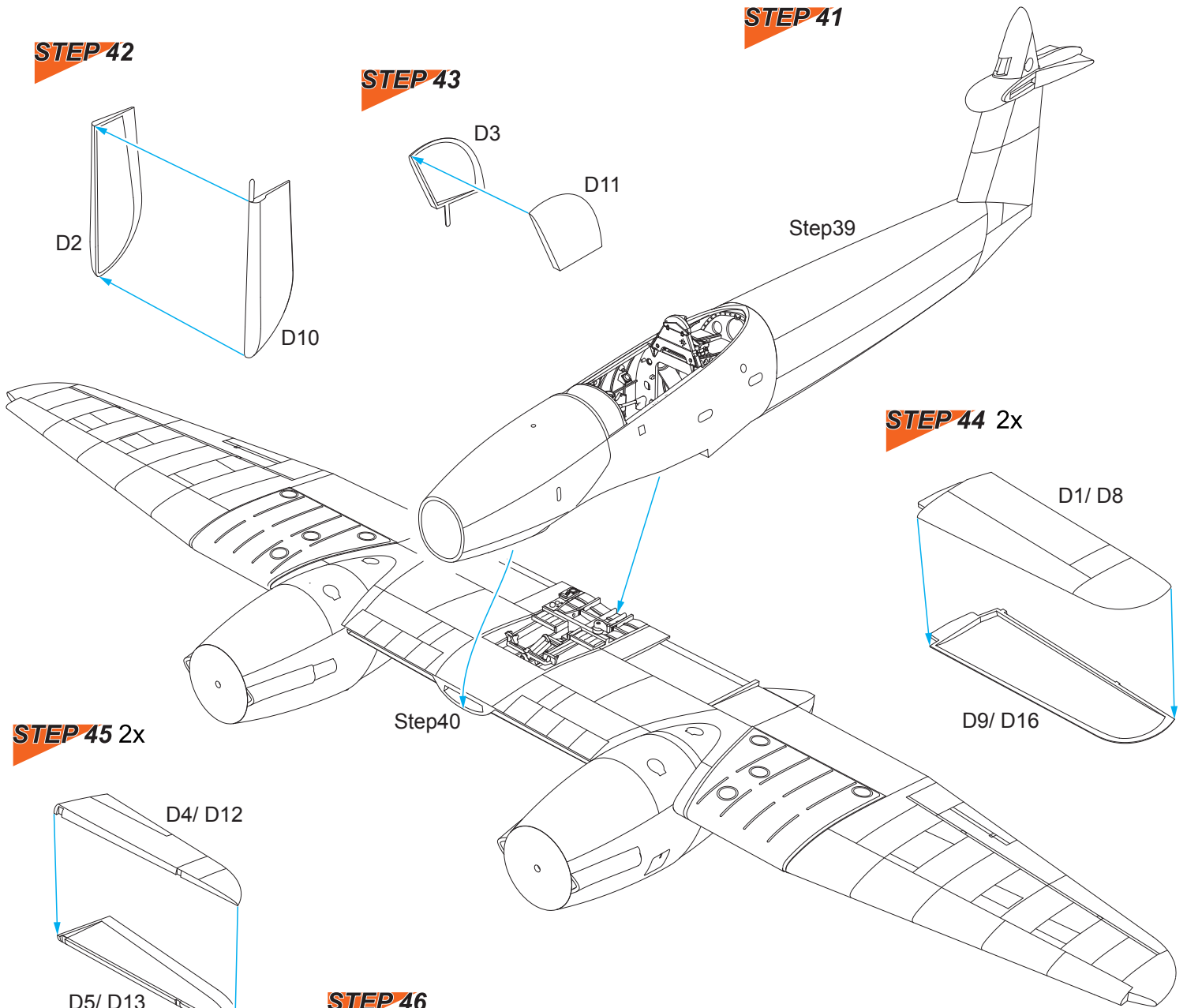
**STEP 42**



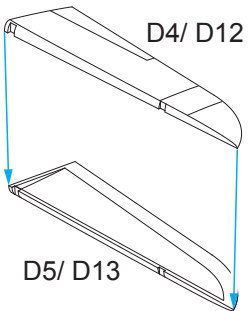
**STEP 43**



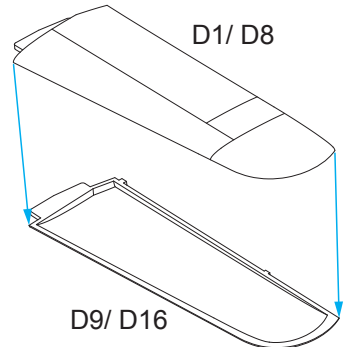
**STEP 41**



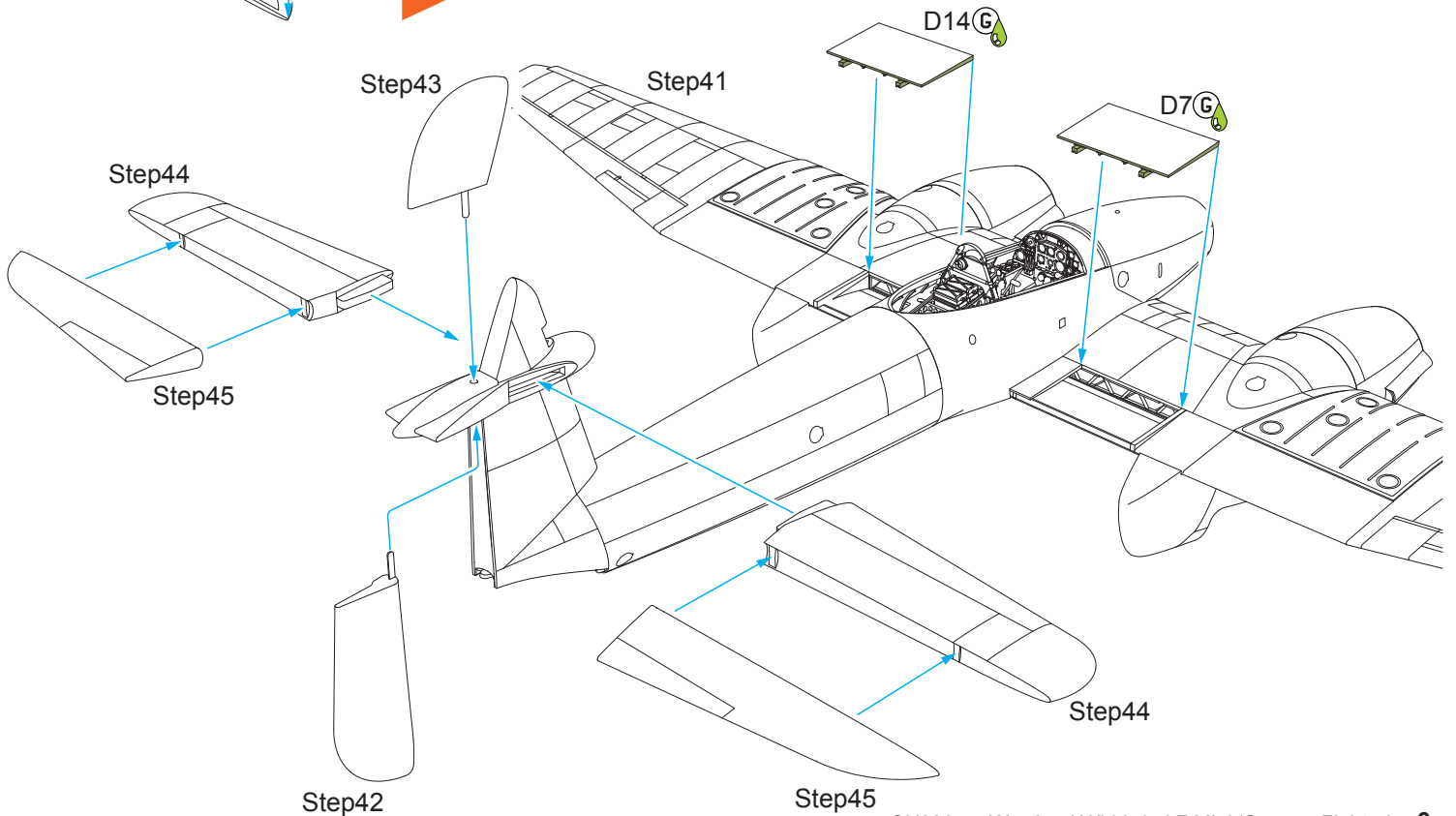
**STEP 45 2x**



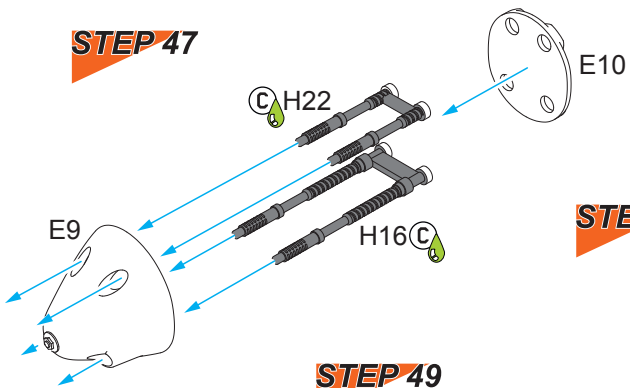
**STEP 44 2x**



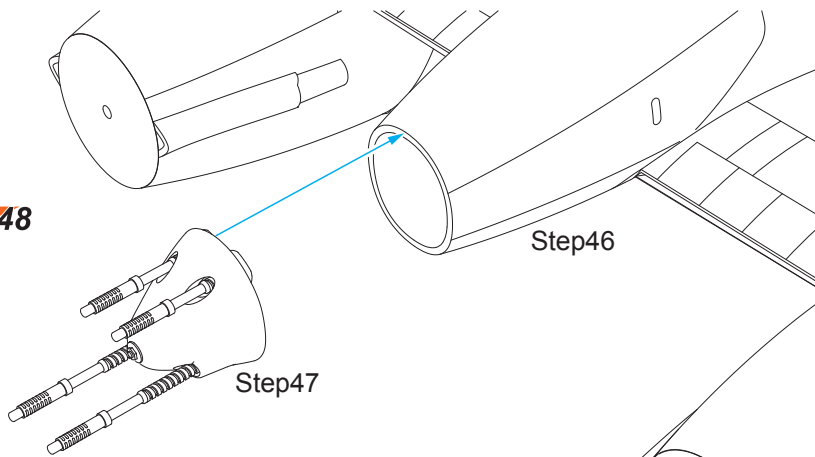
**STEP 46**



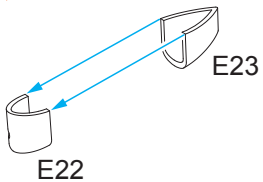
**STEP 47**



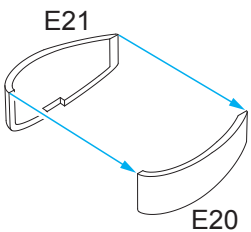
**STEP 48**



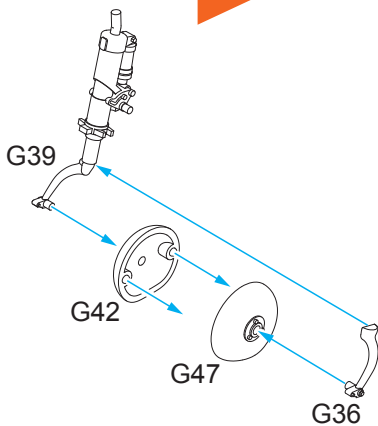
**STEP 49**



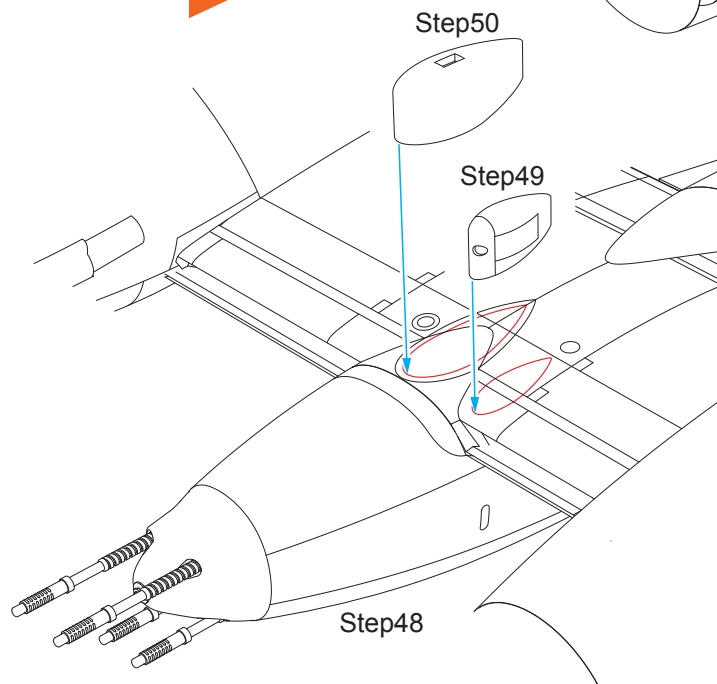
**STEP 50**



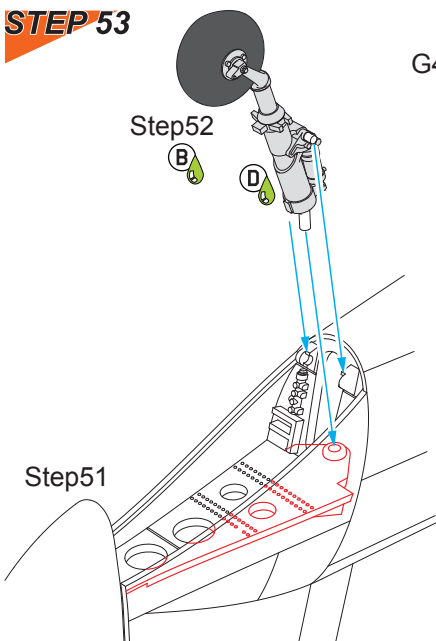
**STEP 52**



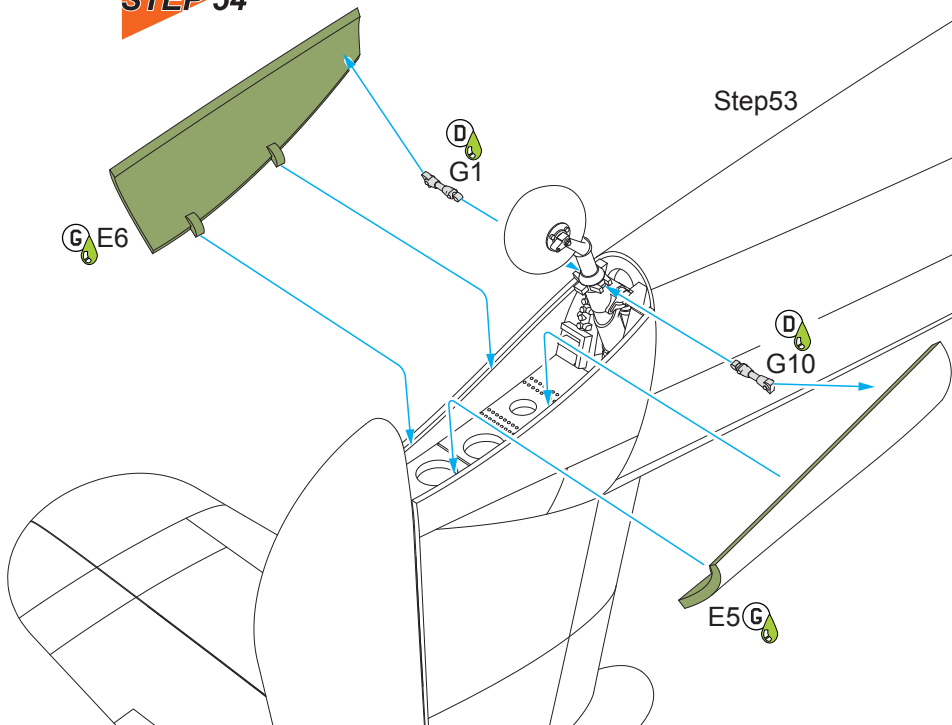
**STEP 51**



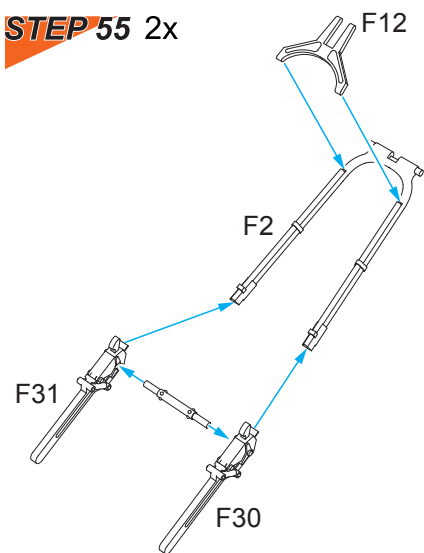
**STEP 53**



**STEP 54**

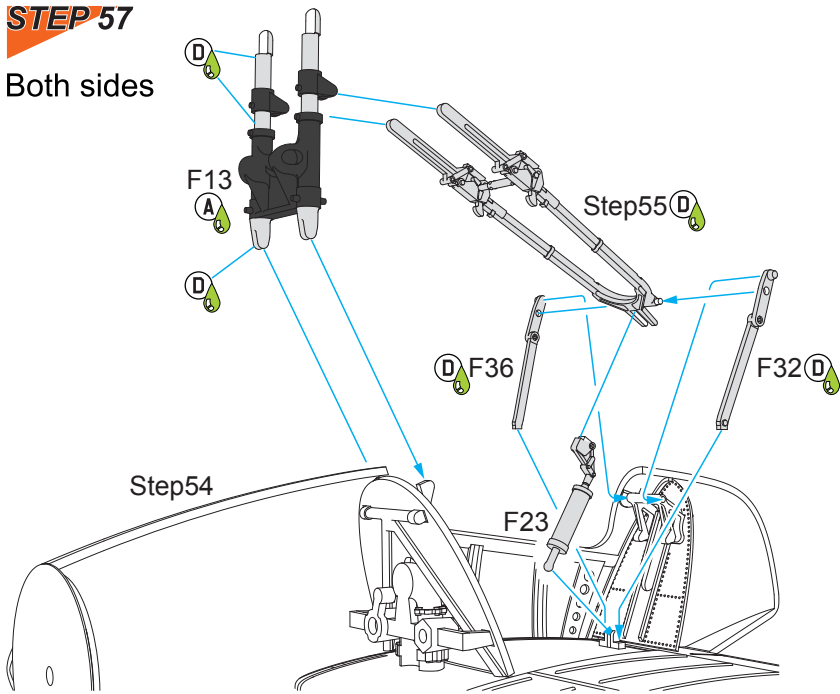


**STEP 55 2x**



**STEP 57**

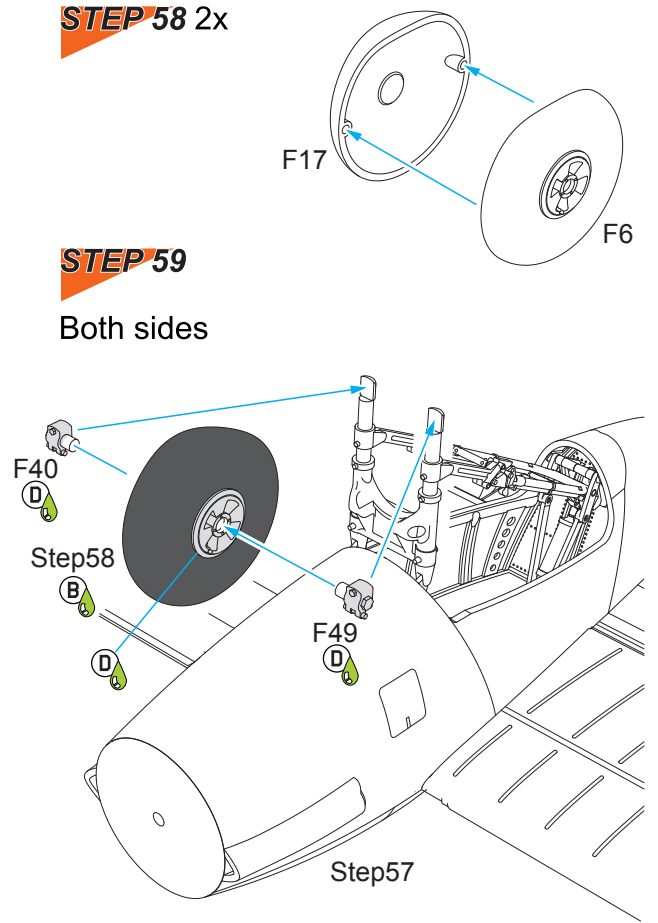
Both sides



**STEP 58 2x**

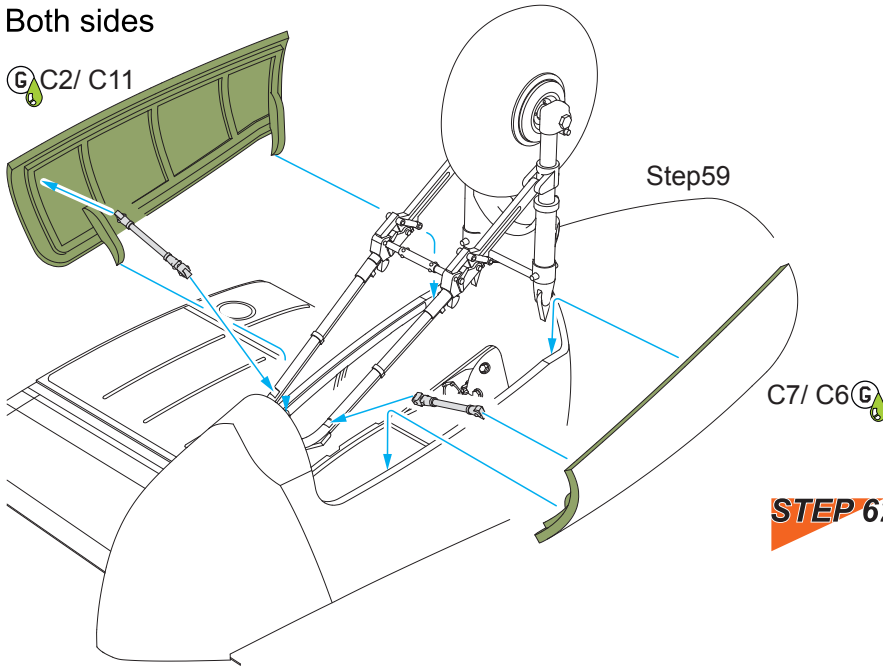
**STEP 59**

Both sides

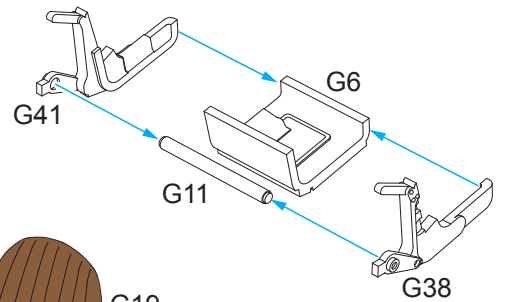


**STEP 60**

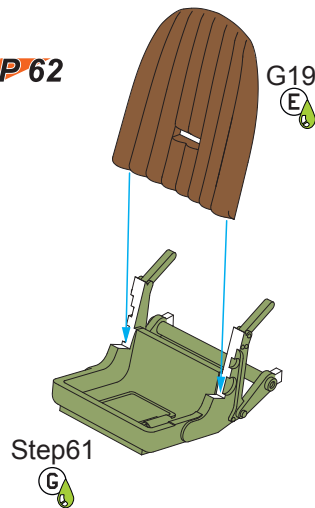
Both sides



**STEP 61**



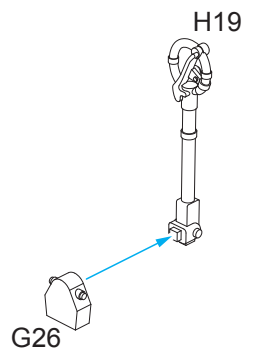
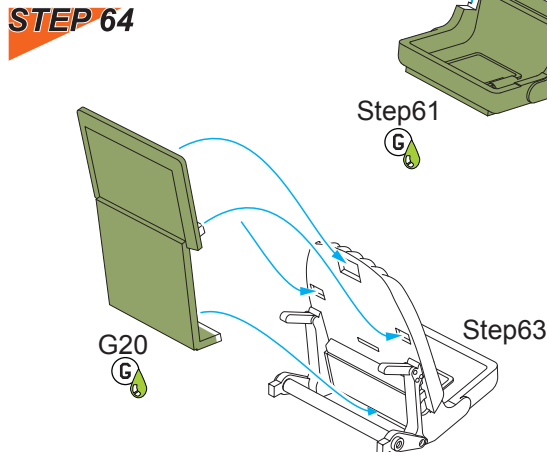
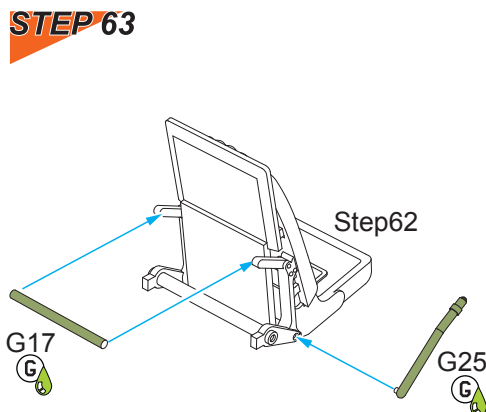
**STEP 62**



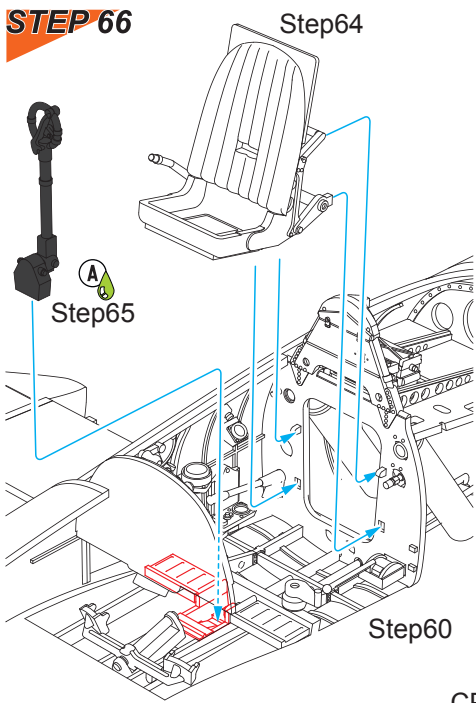
**STEP 63**

**STEP 64**

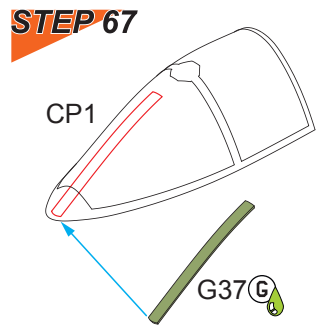
**STEP 65**



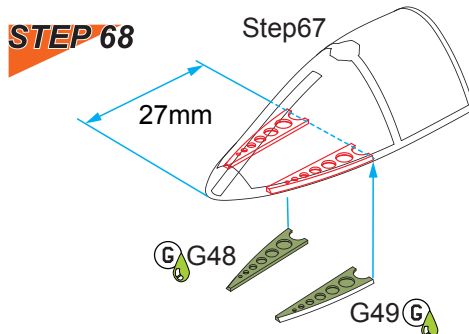
**STEP 66**



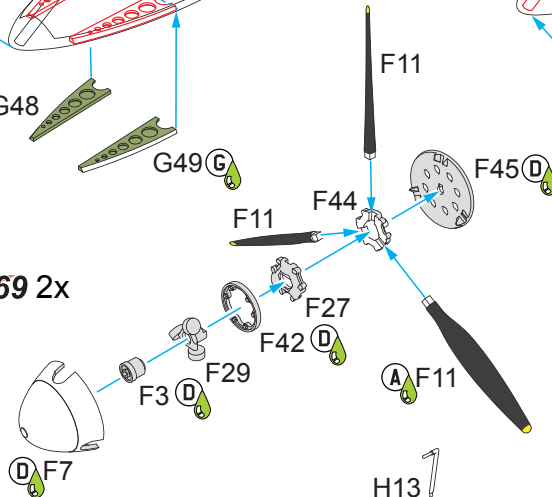
**STEP 67**



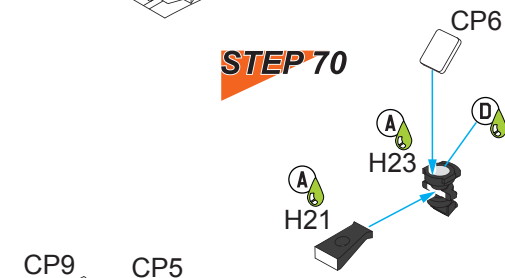
**STEP 68**



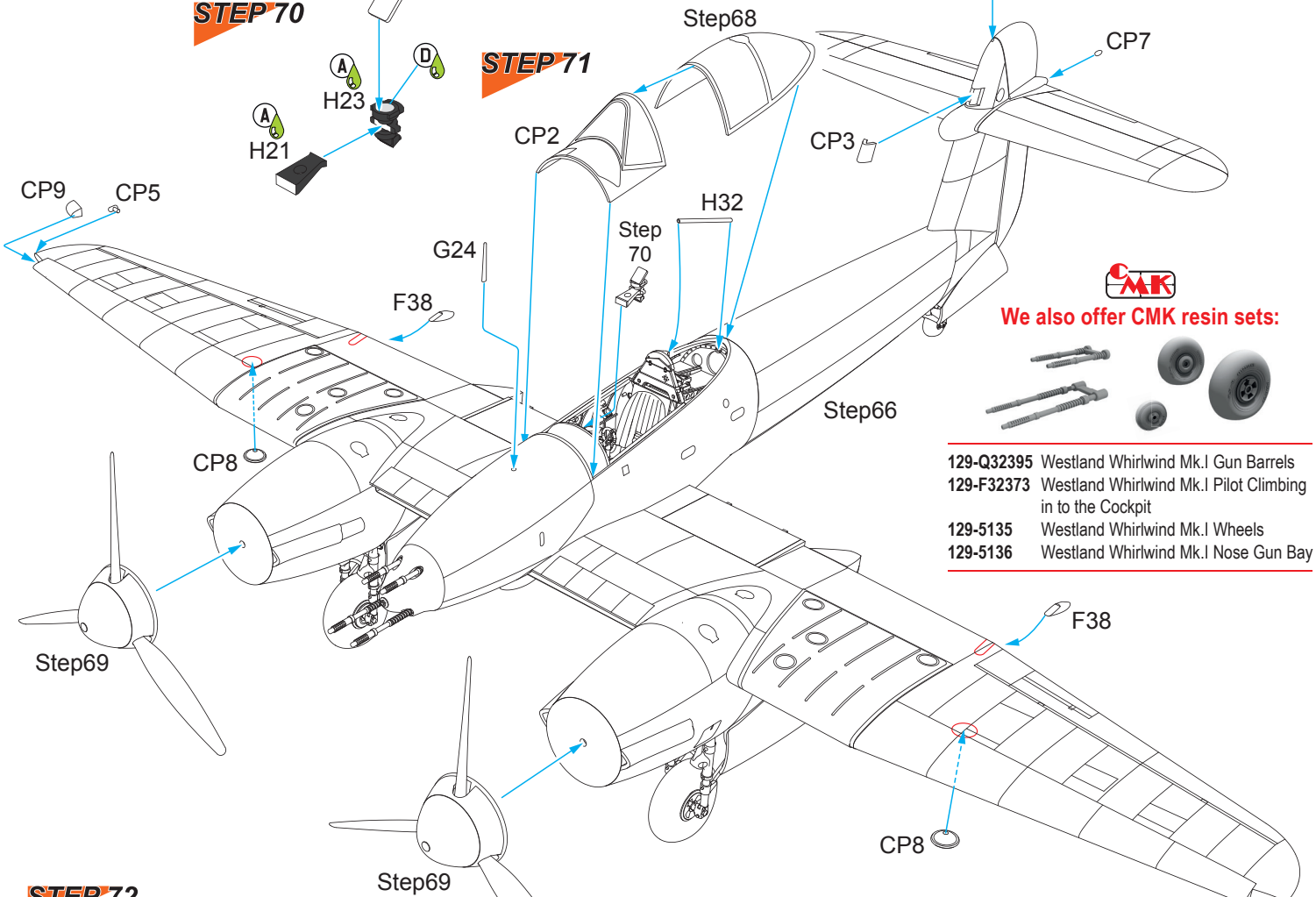
**STEP 69 2x**



**STEP 70**



**STEP 71**

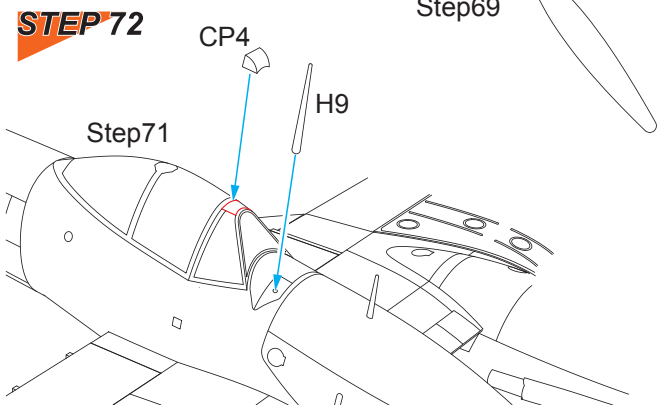


We also offer CMK resin sets:

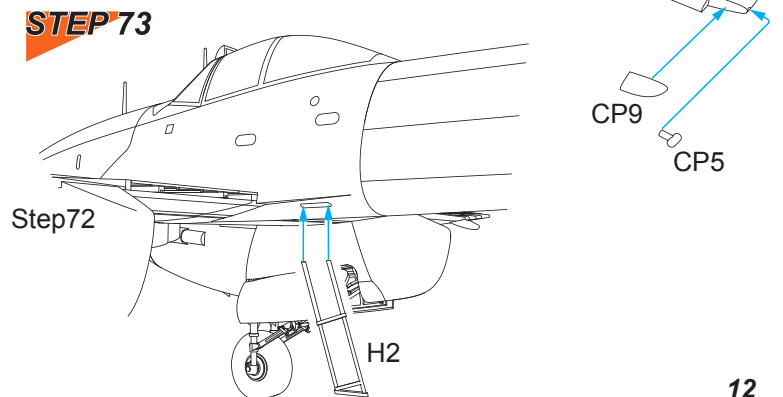


- 129-Q32395 Westland Whirlwind Mk.I Gun Barrels
- 129-F32373 Westland Whirlwind Mk.I Pilot Climbing in to the Cockpit
- 129-5135 Westland Whirlwind Mk.I Wheels
- 129-5136 Westland Whirlwind Mk.I Nose Gun Bay

**STEP 72**



**STEP 73**



Westland Whirlwind Mk.I, P6985, HE-J, No.263 Squadron RAF, Exeter air base, March 1941. The aircraft wore standard camouflage with lower side of the port wing in black color. The rest of the lower surfaces were in BS 381 No. 1 Sky. The spinners and ID band were sprayed later with RAE Sky Blue that was lighter and bluish.

Westland Whirlwind Mk.I, P6985, HE-J, No.263 Squadron RAF, základna Exeter, březen 1941. Letoun ve standardní kamufláži měl levou část křídla zespoda nastříkanou černou barvou. Zbytek spodních ploch byl v barvě BS 381 No.1 Sky. Vrtulové kužely a pruh před ocasními plochami byl nastříkán dodatečně, barvou RAE Sky Blue. Ta byla světlejší a více do modra.

## Camo A



special  
HOBBY

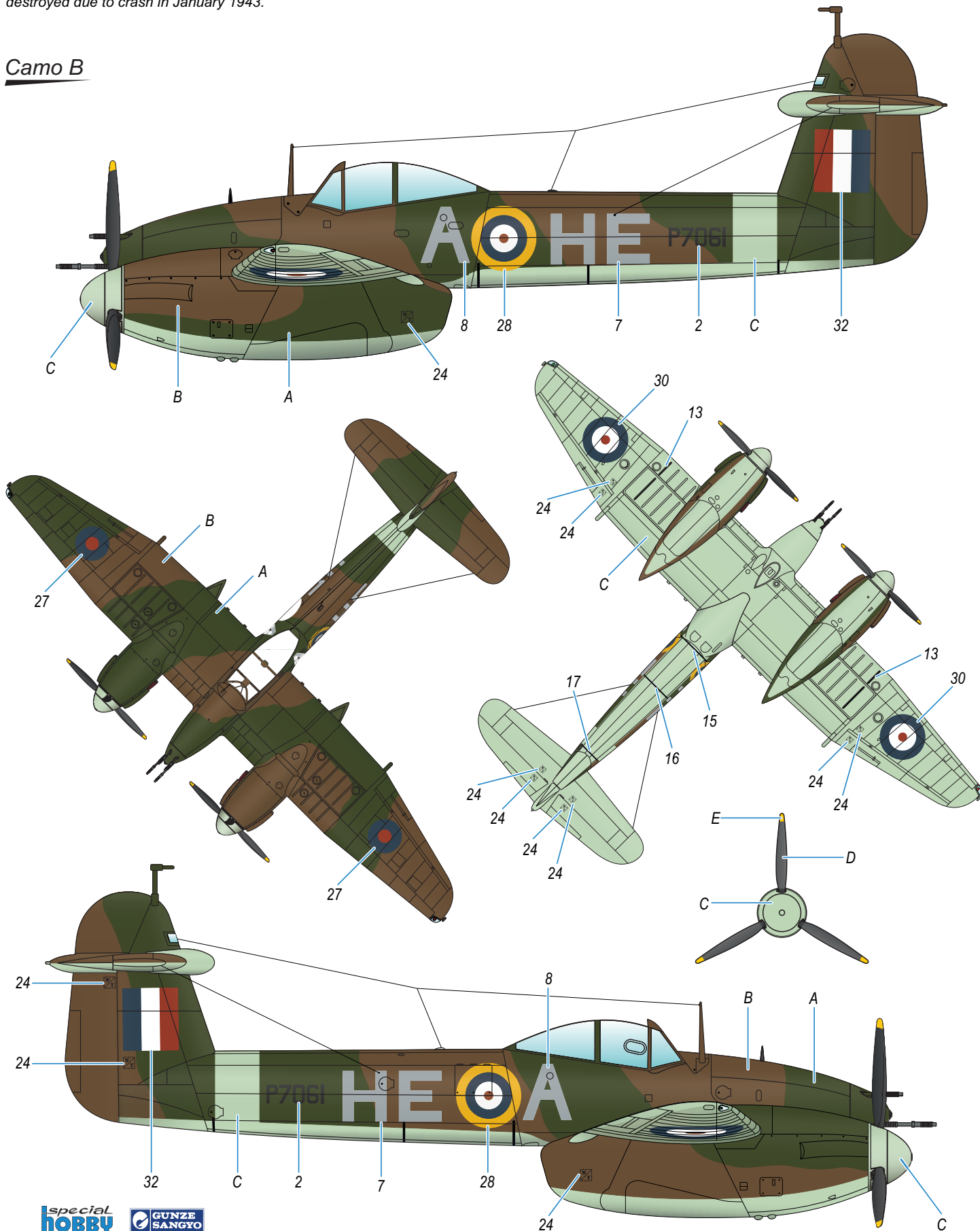
GUNZE  
SANGYO

- |  |  |   |   |  |                                    |
|--|--|---|---|--|------------------------------------|
| <b>A</b> Dark Green<br>Tmavě zelená<br>H330/C361 | <b>B</b> Dark Earth<br>Tmavě hnědá<br>H72/C369 | <b>C</b> Sky BS 381 No.1<br>Nebeská<br>H74/C368 | <b>D</b> RAE Sky Blue<br>Nebeský modrá<br>H74+314/C368+314<br>90% 10% 90% 10% | <b>E</b> Night (Smooth Black)<br>Noční hladká černá<br>H12/C33 | <b>F</b> Yellow<br>Žlutá<br>H/C329 |
|--|--|---|---|--|------------------------------------|

Westland Whirlwind Mk.I, P7061, HE-A, No.263 Squadron RAF, Charmy Down airfield, September 1941. The aircraft wore same colors as P6985/HE-J but lacked the black color on the lower side of the port wing. The code letters sport non standard shapes. In 1942 was the aircraft re-assigned to No.137 Squadron RAF and eventually destroyed due to crash in January 1943.

Westland Whirlwind Mk.I, P7061, HE-A, No.263 Squadron RAF, letiště Charmy Down, září 1941. Stroj nesl stejné barvy kamufláže jako P6985/HE-J, ale bez černé poloviny křídla. Kódová písmena mají nestandardní tvar. Letoun byl v roce 1942 převelen k No.137 Squadron RAF a zničen při havárii v lednu 1943.

## Camo B



special  
HOBBY

GUNZE  
SANGYO

**A** Dark Green  
Tmavě zelená  
H330/C361

**B** Dark Earth  
Tmavě hnědá  
H72/C369

**C** Sky  
Nebeská  
H74/C368

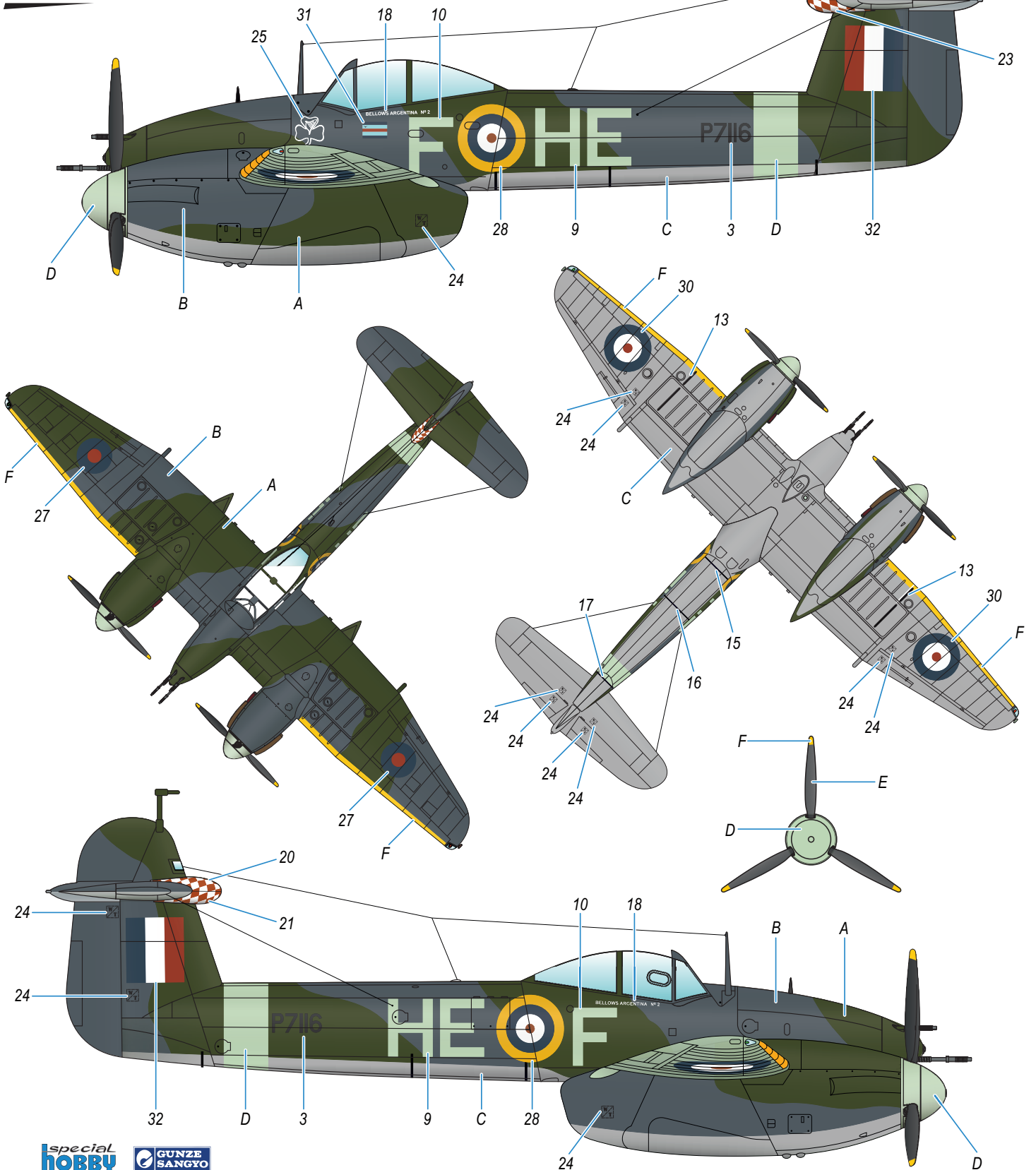
**D** Flat Black  
Matná Černá  
H12/C33

**E** Yellow  
Žlutá  
H/C329

Westland Whirlwind Mk.I, P7118, HE-F, „Bellows Argentina No.2“, pilot S/L Eelse, No.263 Squadron RAF, Colerne airfield, Wiltshire, Winter 1941/42. The aircraft received new Day Fighter Camouflage consisting of green and grey on upper surfaces and Medium Sea Grey on lower ones. There's a Squadron leader's flag below the canopy together with presentation writing. It was one of the seven Whirlwinds purchased by Argentinean sponsors. Also, it sports Irish four-leaf clover and checkerboard on the tail finning. Later, it received new code letters HE-J. It was destroyed in the beginning of 1943.

Westland Whirlwind Mk.I, P7118, HE-F, „Bellows Argentina No.2“, pilot S/L Eelse, No.263 Squadron RAF, letiště Colerne, Wiltshire, zima 1941/42. Letoun dostal novou denní stíhací kamufláž skládající se na horních plochách ze zelené a šedé, spodní plochy byly nastříkány střední mořskou šedou. Pod kabinou nese vlajku velitele squadrony a jméno upozorňující na to, že jde o jeden ze sedmi Whirlwindů zakoupených za peníze sponzorů z Argentiny. Kromě toho je ozdoben irským trojlístkem a šachovnicí na křížení ocasních ploch. Později nesl kódy HE-J. Zničen byl začátkem roku 1943.

## Camo C



special  
HOBBY

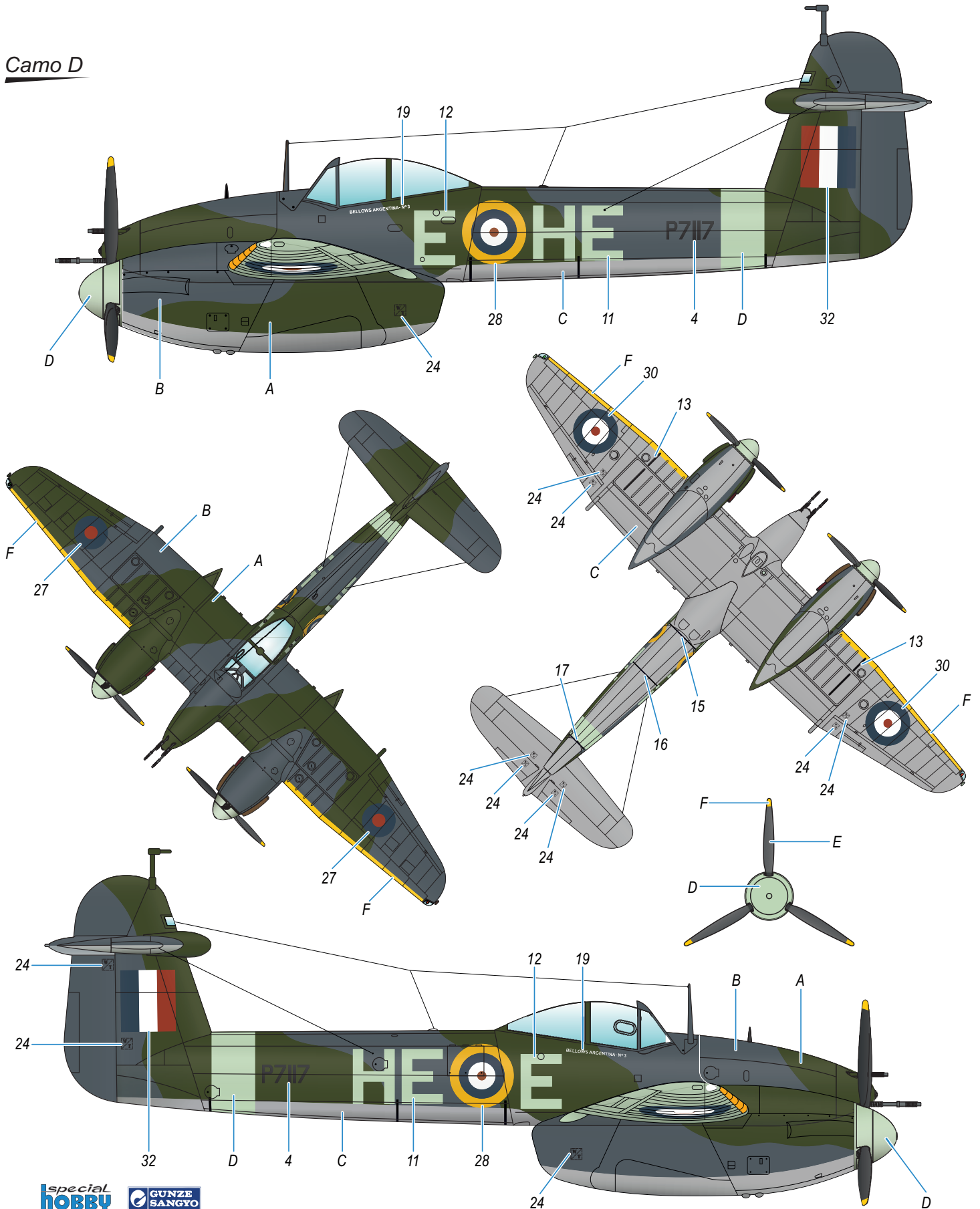
GUNZE  
SANGYO

<b>A</b> Dark Green Tmavě zelená H330/C361	<b>B</b> Ocean Grey Oceánská šedá C362	<b>C</b> Medium Sea Grey Střední mořská šedá H335/C363	<b>D</b> Sky Nebeská H74/C368	<b>E</b> Flat Black Matná Černá H12/C33	<b>F</b> Yellow Žlutá H/C329
--	--	--	-------------------------------------	---	------------------------------------

Westland Whirlwind Mk.I, P7081, HE-E, "Bellows Argentina No.3", No.263 Squadron RAF, Charmy Down airfield, October 1941. The presentation writing below the canopy signifies one of the seven Whirlwinds purchased by Argentinean patriots. It went MIA (missing in action) on April 18, 1943.

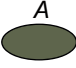
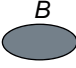
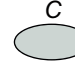
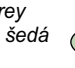


Westland Whirlwind Mk.I, P7081, HE-E, „Bellows Argentina No.3“, No.263 Squadron RAF, letiště Charmy Down, říjen 1941. Nápis pod kabinou je dokladem toho, že jde o jeden ze sedmi Whirlwindů pořízených patrioty z Argentiny. Je veden jako ztracený v akci 18. 4. 1943.

## Camo D



special  
HOBBY

GUNZE  
SANGYO

	<b>A</b> Dark Green Tmavě zelená H330/C361		<b>B</b> Ocean Grey Oceánská šedá C362		<b>C</b> Medium Sea Grey Střední mořská šedá H335/C363		<b>D</b> Sky Nebeská H74/C368		<b>E</b> Flat Black Matná Černá H12/C33		<b>F</b> Yellow Žlutá H/C329
--	--	---	--	---	--	---	-------------------------------------	---	---	---	------------------------------------